



Bureau of Reclamation
2800 Cottage Way, MP-170
Sacramento, Calif. 95825-1898

Field Activity Advisory Reach 3 Geophysical Surveys March 2020

The San Joaquin River Restoration Program (SJRRP) is preparing to conduct geophysical investigations in Reach 3 of the San Joaquin River Restoration Area. These surveys include frequency-domain electromagnetic (FEM) mapping and electrical resistivity tomography (ERT). The surveys will be conducted to create a screening level map of subsurface conditions and to create a deeper profile of subsurface conditions in the levees downstream of Mendota Dam.

Who: U.S. Bureau of Reclamation

What: Reclamation staff would spend several days FEM mapping, and one to two additional days performing ERT, based on initial results. The FEM mapping technique is non-invasive, and the systems are hand or vehicle-carried and do not contact the ground surface at all. Any physical impact on the survey area is from the field crew walking or driving a vehicle and cart along survey lines (existing roads and levees). Once the area is mapped, the results will be used to locate areas that are optimal for deeper subsurface investigation with electrical resistivity tomography (ERT). The team is looking for sandy areas that could be problematic for potential levee design. The ERT lines are set up with metal electrodes driven into the ground at a regular spacing (most typically every 10ft) and connected with a cable. When surveying is completed, all equipment is removed, leaving no evidence of the survey being conducted.

When: Week of March 2, 2020 or the week of March 9, 2020 (weather depending)

Where: Reach 3 of the San Joaquin River Restoration Area (see Figure A below)

Questions about SJRRP field activities on public and private land should be directed to the SJRRP Landowner Coordinator below. Questions about the SJRRP should be directed to the Public Affairs Specialist below.

Josh Newcom
Public Affairs Specialist
San Joaquin River Restoration Program
Phone: (916) 978-5508
Email: snewcom@usbr.gov

Craig Moyle
Landowner Coordinator
San Joaquin River Restoration Program
Phone: 916-418-8248
Email: craig.moyle@stantec.com

Contact the SJRRP Hotline, 916-978-4398, or email RestorationFlows@restoresjr.net if you see any problems or have any concerns.

For more information, please visit the SJRRP Web site at www.restoresjr.net or contact Josh Newcom, Public Affairs Specialist, at 916-978-5508. Field Advisories for activities are available at <http://restoresjr.net/get-involved/field-advisories/>

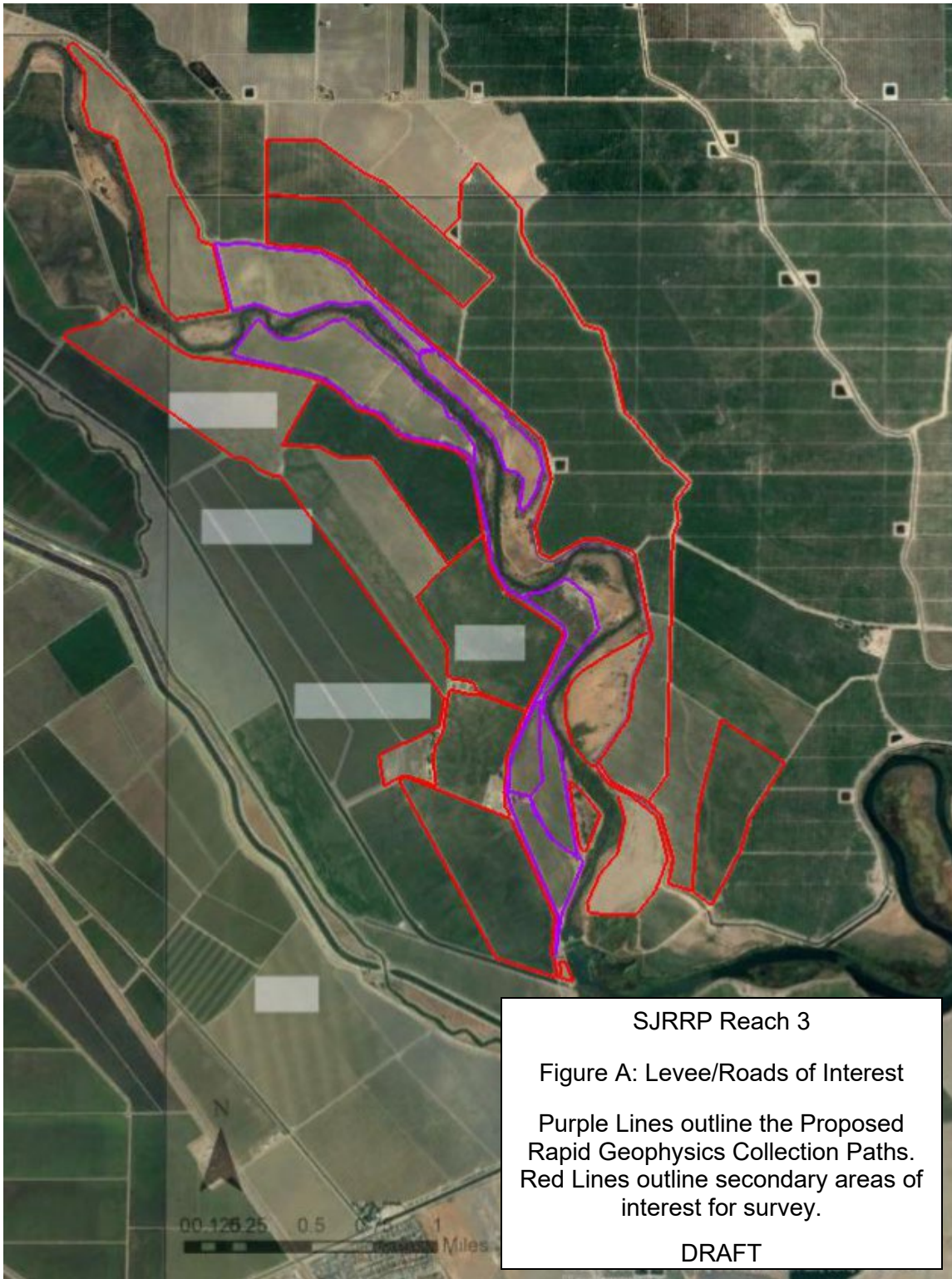


Figure A