

San Joaquin River Restoration Program Mendota Pool Bypass and Reach 2B Improvements Project

Landowner Meeting

October 3, 2011 1pm-4pm

Andrew Firebaugh Historical Community Center
1655 13th Street, Firebaugh, CA

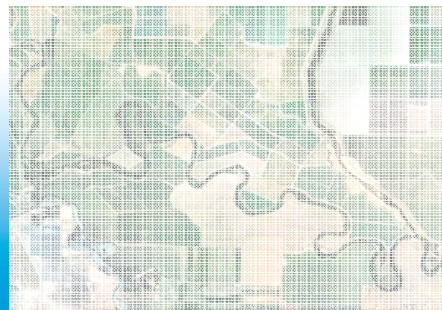


Agenda

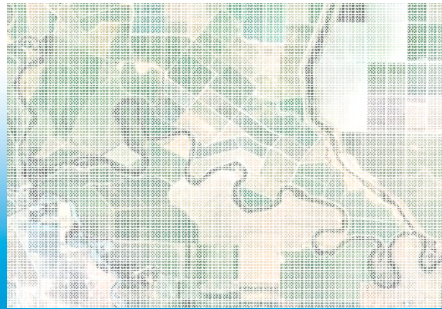
1. Introductions
 - Agenda Overview
 - Meeting Purpose
2. California State Lands Commission Draft Administrative Maps
3. Program Update
4. Reach 2B Update
5. Landowner Information Sharing
6. Future Meetings
7. Recap
8. Review Assignments and Follow-up

Introductions

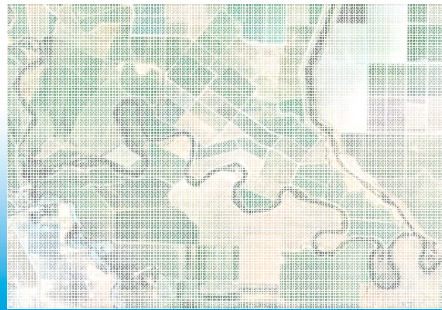
State Lands Commission Maps



Program Update



Reach 2B Update



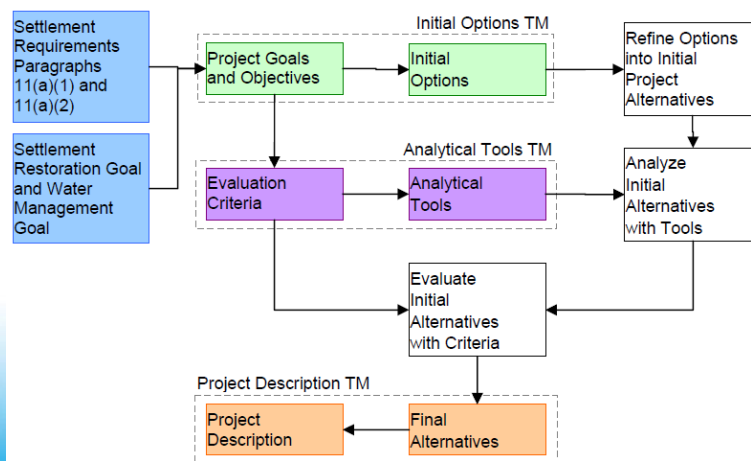


R2B Technical Reports

- | | |
|---|----------|
| 1. Final Scoping Report | 2/28/10 |
| 2. Exist. Env. Conditions: Data
Needs and Survey Approach TM | 3/17/10 |
| 3. Initial Options TM | 4/2/10 |
| 4. Analytical Tools TM | 10/15/10 |
| 5. 2010 Field Survey – Landowner
Summaries | 1/6/11 |
| 6. Final Field Survey Report | pending |
| 7. Project Description TM | ongoing |



R2B Alternatives Evaluation Process



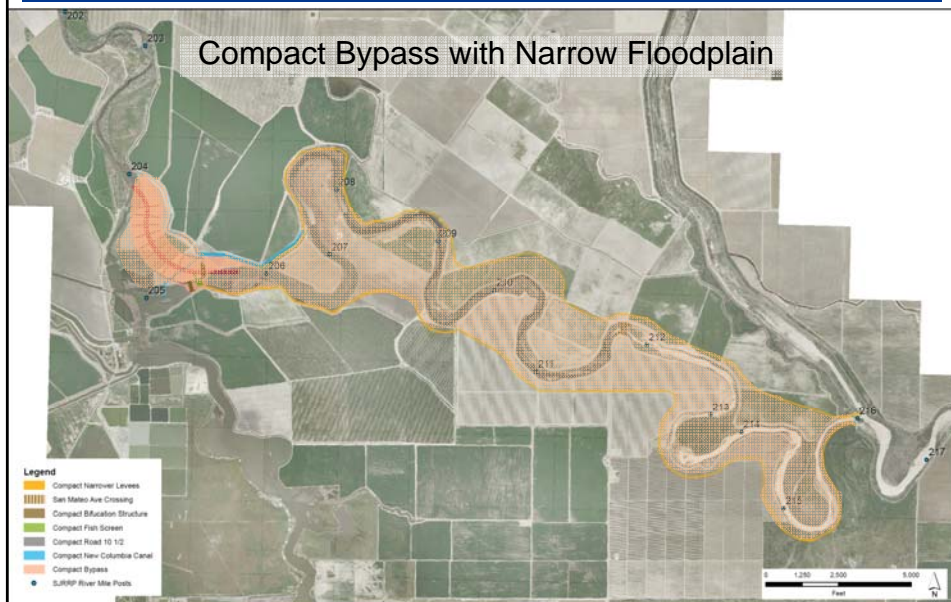


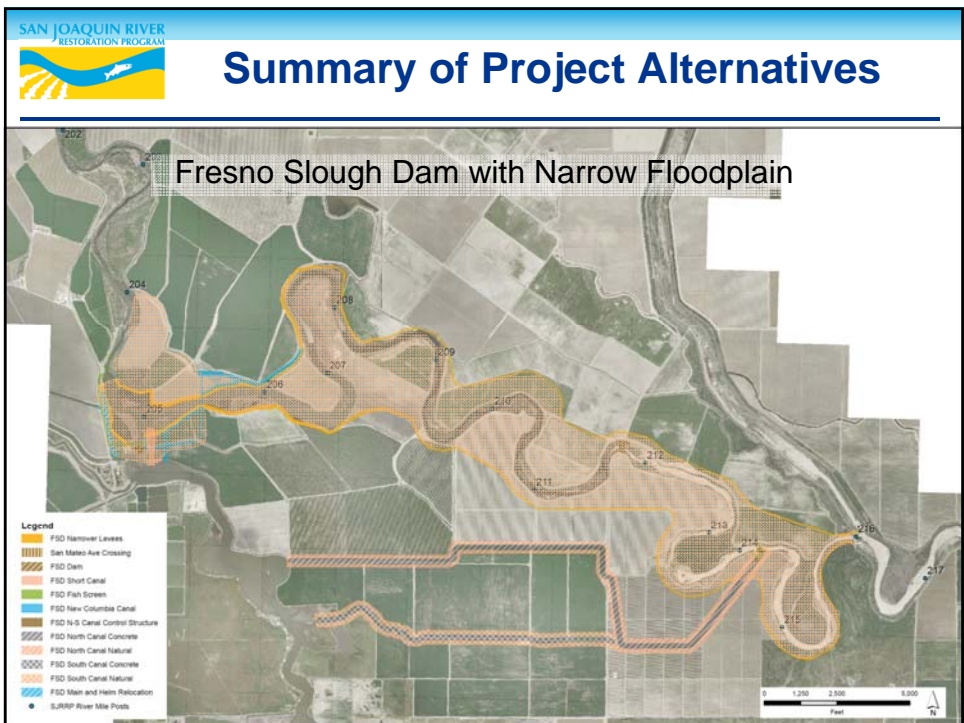
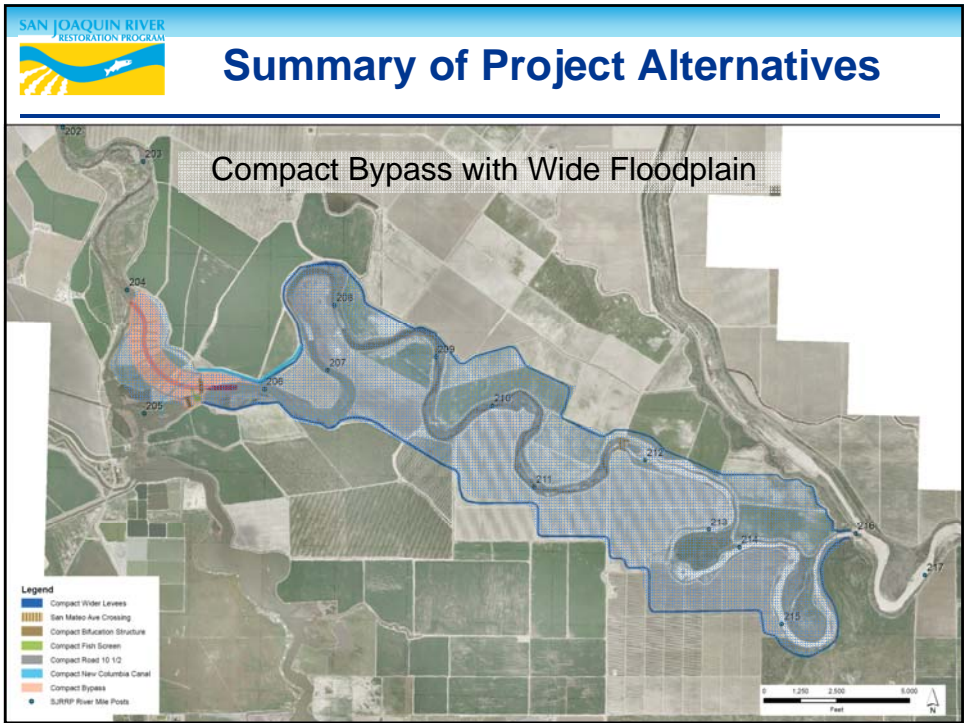
Summary of Project Alternatives

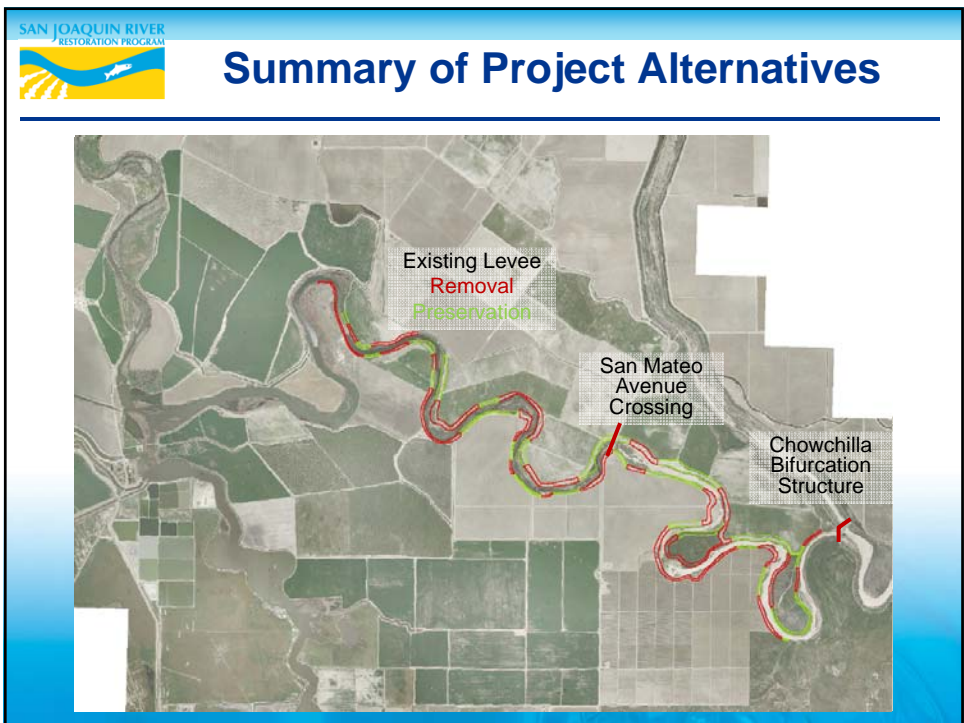
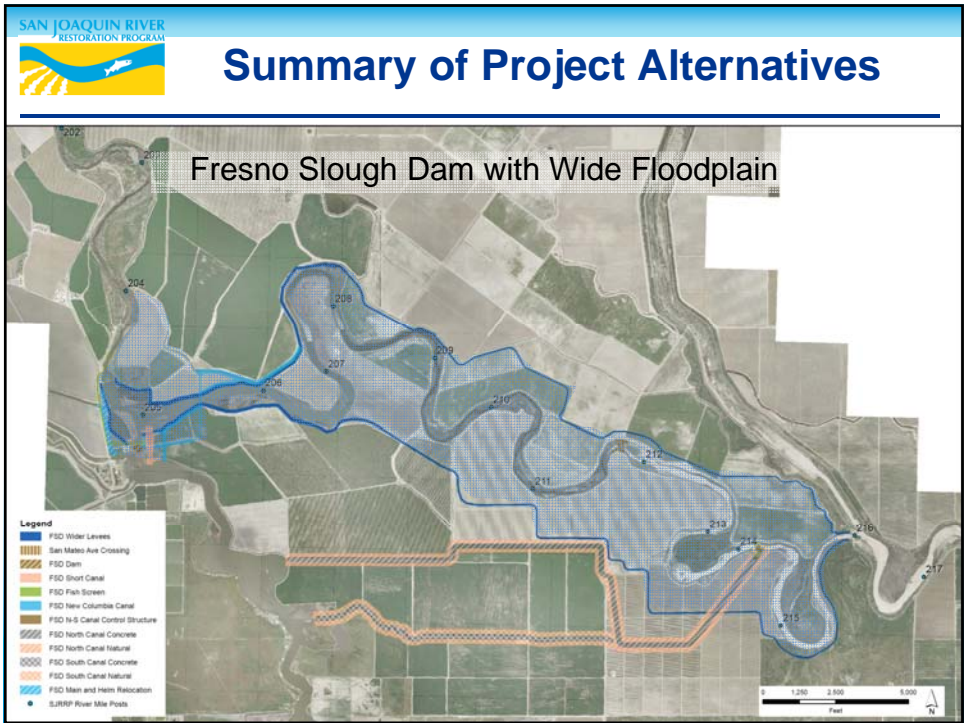
- Compact Bypass with Narrow Floodplain
- Compact Bypass with Wide Floodplain
- Fresno Slough Dam with Narrow Floodplain
- Fresno Slough Dam with Wide Floodplain
- Eliminated:
 - FP-1, FP-5, Settlement Bypass
- Ongoing Challenges
 - FMWG coordination for fish friendly structures
 - Lack of access for investigations/impact assessment



Summary of Project Alternatives









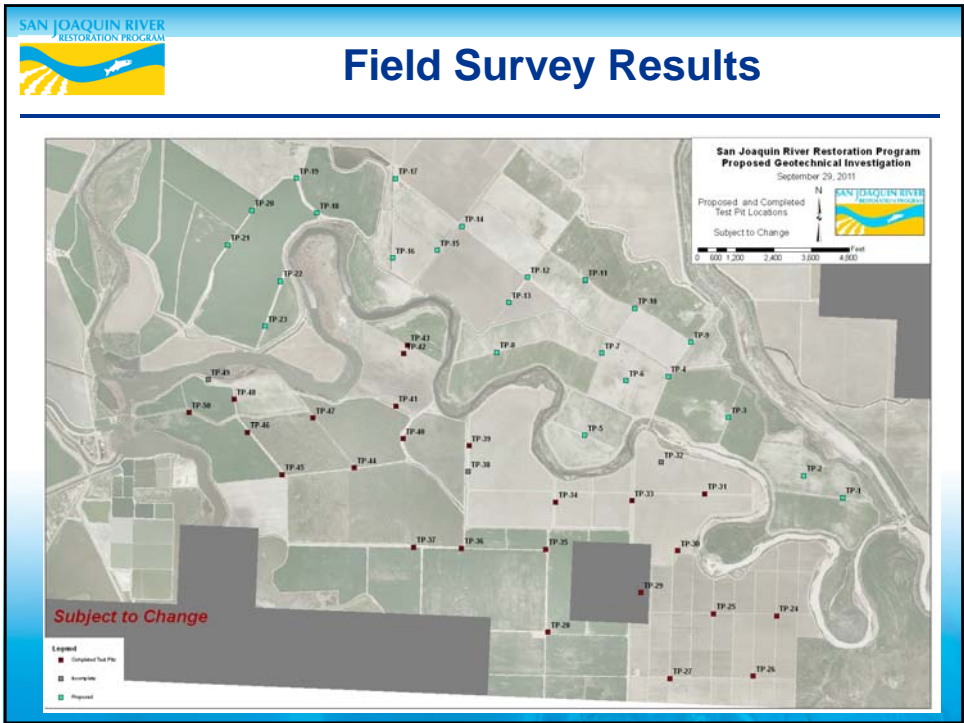
Project EIS/R

- Completed or Ongoing:
 - Resource Areas Approach
 - Affected Environment
- Upcoming
 - Impact Assessment
 - Draft EIS/R



Field Survey Results

- Fresno Kangaroo Rat:
 - Trapping completed Summer 2011
 - No rats found
- Valley Elderberry Longhorn Beetle (VELB)
 - Survey completed in Spring 2011
 - Locations documented and mitigation will be developed
- Rare Plant Surveys
 - Survey completed in Summer 2011
 - No rare plants found
- Geotechnical Test Pits
 - To identify material for levee borrow
 - Fresno County field work completed Fall 2011
 - Lab Testing to be completed Winter 2011





Estimated Project Schedule

- Final Project Description TM – Summer 2012
- Public Draft EIS/R – Spring 2013
- Public Final EIS/R – Early 2014
- Design Complete – Summer 2015



Landowner Information Sharing

