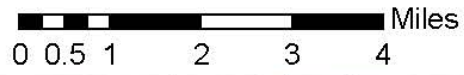
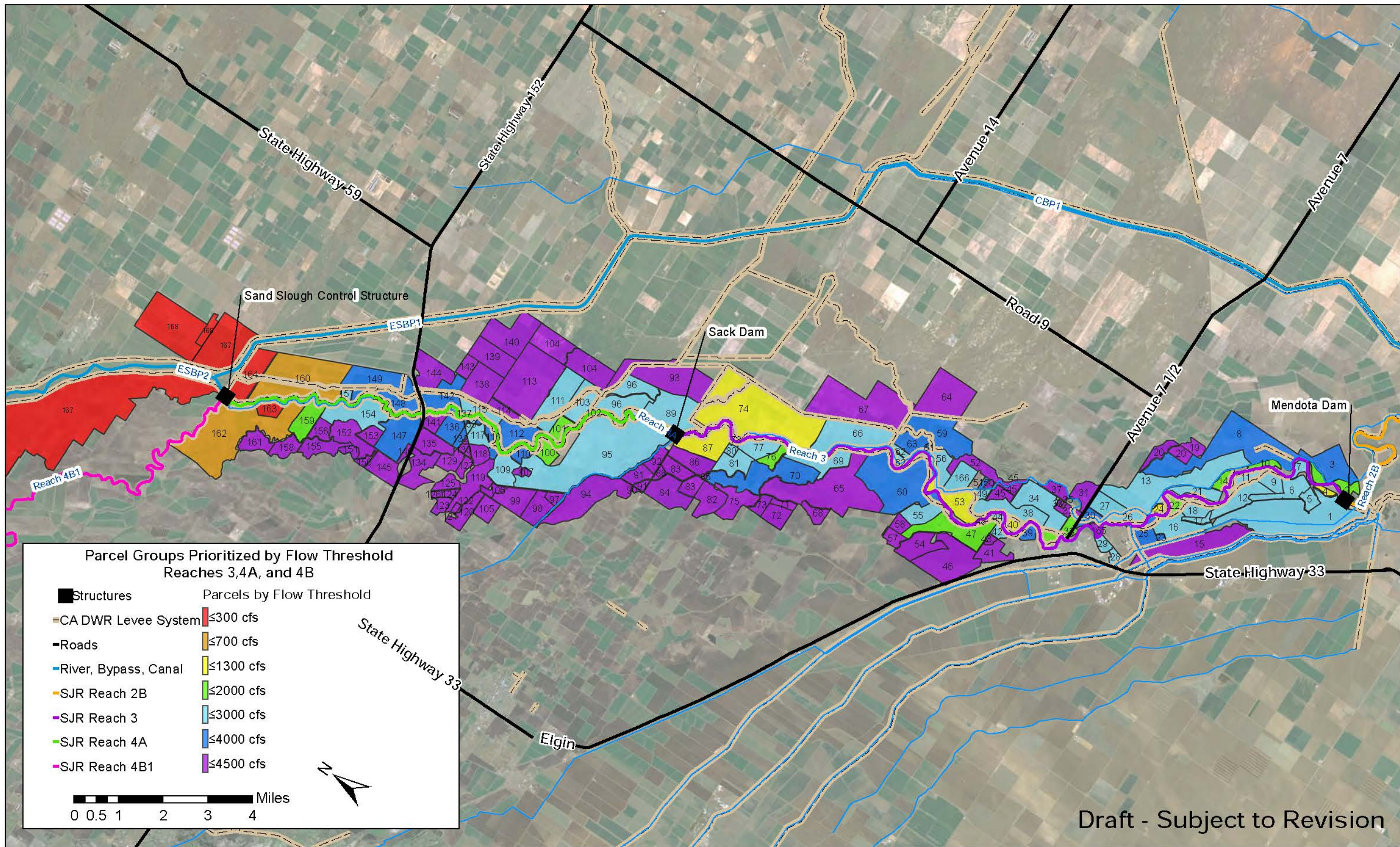


**Parcel Groups Prioritized by Flow Threshold  
Reaches 3,4A, and 4B**

- |  |  |
|--|--|
| <ul style="list-style-type: none"> <li>■ Structures</li> <li>— CA DWR Levee System</li> <li>— Roads</li> <li>— River, Bypass, Canal</li> <li>— SJR Reach 2B</li> <li>— SJR Reach 3</li> <li>— SJR Reach 4A</li> <li>— SJR Reach 4B1</li> </ul> | <p><b>Parcels by Flow Threshold</b></p> <ul style="list-style-type: none"> <li>■ ≤300 cfs</li> <li>■ ≤700 cfs</li> <li>■ ≤1300 cfs</li> <li>■ ≤2000 cfs</li> </ul> |
|--|--|

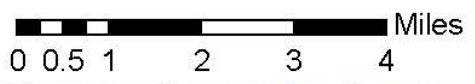


**Draft - Subject to Revision**



**Parcel Groups Prioritized by Flow Threshold  
Reaches 3,4A, and 4B**

- |                      |           |
|----------------------|-----------|
| Structures           | ≤300 cfs  |
| CA DWR Levee System  | ≤700 cfs  |
| Roads                | ≤1300 cfs |
| River, Bypass, Canal | ≤2000 cfs |
| SJR Reach 2B         | ≤3000 cfs |
| SJR Reach 3          | ≤4000 cfs |
| SJR Reach 4A         | ≤4500 cfs |
| SJR Reach 4B1        |           |



Draft - Subject to Revision