



Porterville In-Lieu Project Service Areas 1&2

Porterville Irrigation District (PID) is proposing to build new water conveyance facilities in two service areas within the district that currently do not have infrastructure to receive surface water deliveries. Figure 1 shows the location of Service Areas 1 and 2 that make up the (Project). Increasing the area within PID that can take surface water deliveries will allow PID to use more of its Friant Division Central Valley Project contract water supply. It will also allow PID to capture additional wet year water supplies to offset water supply impacts caused by the San Joaquin River Restoration Settlement.

Service Area 1 is an in-lieu service area that will serve approximately 1,400 acres of land that do not currently receive surface water from the District. The water would be delivered by gravity to Service Area 1 through a new turnout and 10,000-foot lateral off Wood Central Ditch with a designed capacity of 22 cubic feet per second (cfs). Service Area 2 is an in-lieu service area that will serve approximately 720 acres of land that do not currently receive surface water from the District. The water would be delivered by gravity to Service Area 2 through a new turnout and 5,200 foot lateral off the Poplar Ditch Pipeline with a designed capacity of 8 cfs. It is expected that this lateral may vary between open channel and piped sections depending on hydraulics, land acquisition, topography of the land, and pipe costs.

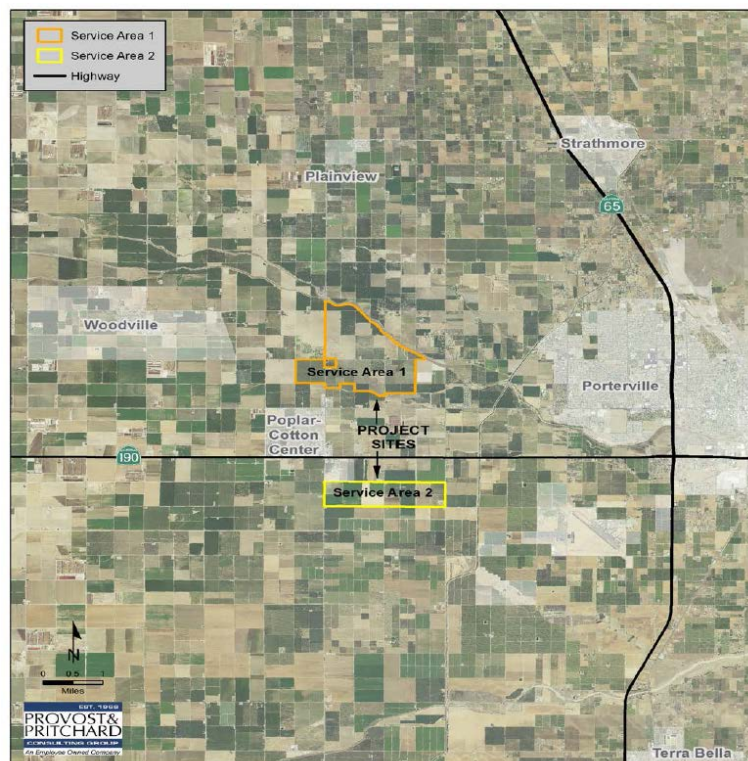


Figure 1. Project Site Map

The Project has an estimated total cost of \$2,800,000, with a Federal cost share funding of \$1,200,000.

The Project has an estimated long-term Recovered Water Account reduction of 26,933 acre-feet.

[Project Contact Information](#)
Porterville Irrigation District
Sean Geivet, General Manager
(559) 784-0716