



Field Activity Advisory Invasive Species Sampling November 3, 2014

The U.S. Fish and Wildlife Service (FWS) and the California Department of Fish and Wildlife will perform invasive species sampling along three miles of the San Joaquin River and Chowchilla Bypass. On October 6 an invasive Weather Loach, a species sold for aquarium, was captured by FWS staff upstream of the Chowchilla Bifurcation Structure in Reach 2A. More intensive sampling will be conducted to determine if that fish was a lone individual released at the site, or is part of a larger population.

Who: U.S. Fish and Wildlife Service (FWS) and California Department of Fish and Wildlife (CDFW), in coordination with the FWS's Aquatic Invasive Species Program staff.

What: Backpack electrofishing and seine nets will be used to conduct sampling. Field activities will focus on habitat types preferred by Loaches. Individuals captured will be identified, weighed, measured, and if they represent a new (invasive) species in the San Joaquin River they will be retained for laboratory identification. All field activities will take place between dawn and dusk, with no overnight sampling.



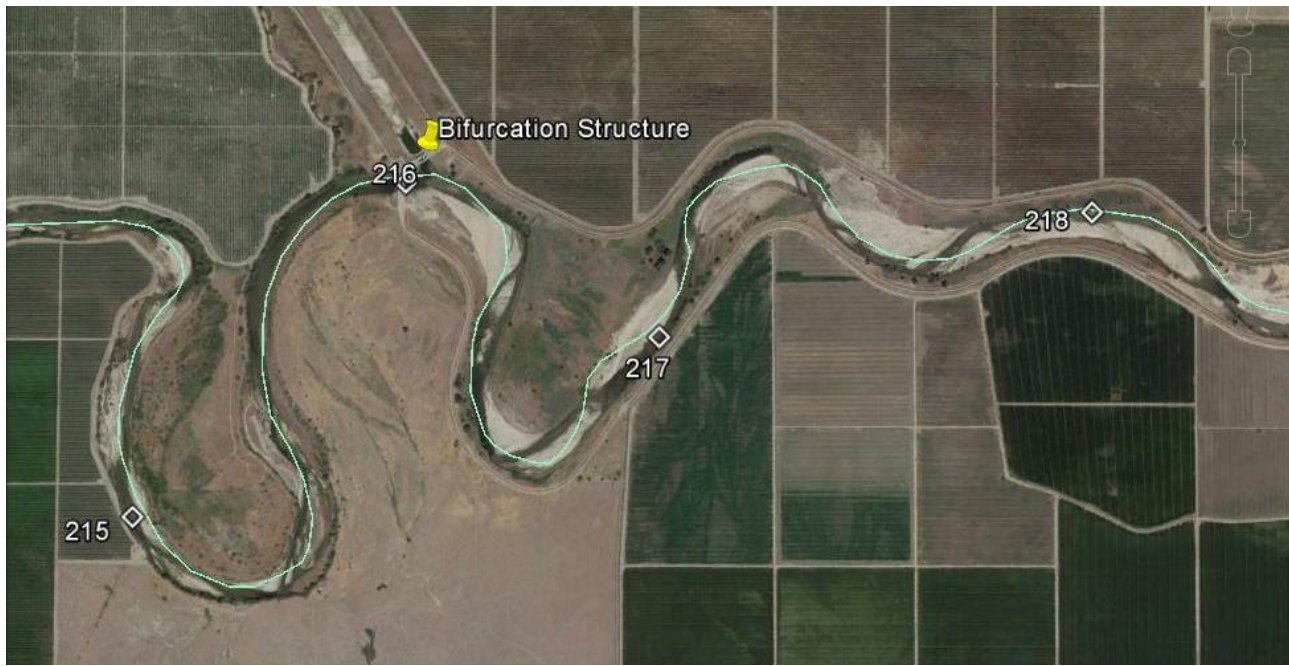
Figure 1: Weather loach captured in Reach 2A

Environmental disclosure documents including a California Environmental Quality Act (CEQA) Notice of Exemption (NOE) and a National Environmental Policy Act (NEPA) Categorical Exemption are available upon request.

The information collected through the study will help determine population status of potential invasive fish species.

When: November 12, 2014

Where: Sampling will occur from river mile 215 to mile 218 near the Chowchilla Bifurcation Structure. (See map).



Access will occur from the Chowchilla Bifurcation Structure and through the navigable water way.

Questions about this activity should be directed to the study's agency point-of-contact using the information provided below.

Zachary Jackson Fisheries Biologist, U.S. Fish and Wildlife Service,
Phone: (209) 334-2968 ext. 408,
Email: zachary_jackson@fws.gov

Questions about activities on public and private land should be directed to the SJRRP Landowner Coordinator, Craig Moyle. Craig's contact information is provided below.

Craig Moyle, Landowner Coordinator
Office (operator): 916-924-8844
Office (direct line): 916-418-8248
Mobile: 916-642-6383
Fax: 916-924-9102
Email: craig.moyle@mwhglobal.com

For more information, please visit the SJRRP Web site at www.restoresjr.net.