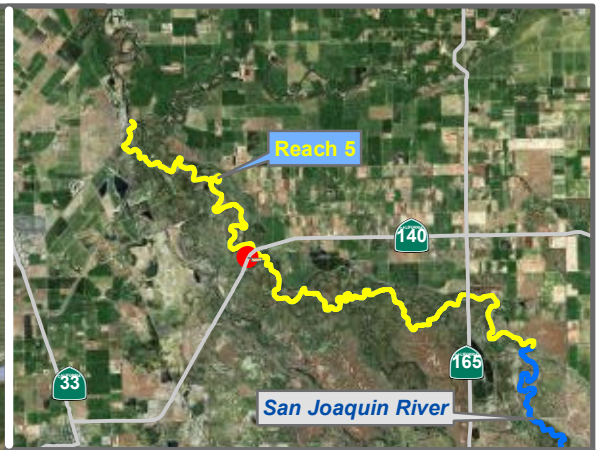


**RECLAMATION**  
*Managing Water in the West*

# Reach 5 GW Monitoring Locations

Preliminary Data





Reach = 5  
 River Mile = 125.1  
 X = -120.9332 Y = 37.3080  
 (Horizontal Datum is NAD83)  
 Distance From River (ft)= 1043  
 Reference Elevation (ft NAVD88) = 64.9  
 Site = Hwy. 140  
 Land Use = Public Land  
 Protocol Reference = ATR App F Sec 2  
 Agency = USBR  
 Measurements:  
 1. Type = Electronic Sounder Measurement  
 Interval = Monthly  
 Date Range =  
 2. Type =  
 Interval =  
 Date Range =  
 3. Type =  
 Interval =  
 Date Range =

Description:  
 2 inch PVC casing FM, no adjacent fields,  
 no threshold

Root Depth (ft bgs) = 0  
 GS Buffer (ft) =  
 Screen Depth (ft bgs) = 28.7 - 48.7  
 Capillary Rise (ft) = 1  
 Historical GW level (ft bgs) = 50  
 Field Threshold (ft bgs) = 1  
 Threshold Elevation(ft NAVD88) = 63.74

Influences:

\* = assumed value  
 bgs = below ground surface  
 NR = not recorded

Last Updated:  
 8/9/2011  
 Preliminary Data

0 500 1,000 2,000 Feet



Groundwater

# Monitoring Location MW-09-121



Reach = 5  
 River Mile = 125.1  
 X = -120.9308 Y = 37.3095  
 (Horizontal Datum is NAD83)  
 Distance From River (ft) = 143  
 Reference Elevation (ft NAVD88) = 70.3  
 Site = Hwy. 140  
 Land Use = Public Land  
 Protocol Reference = ATR App F Sec 2  
 Agency = USBR

Merced County  
 Left Bank  
 Status = Existing

**Measurements:**

1. Type = Electronic Sounder Measurement  
Interval = Monthly  
Date Range =
2. Type =  
Interval =  
Date Range =
3. Type =  
Interval =  
Date Range =

**Description:**

2 inch PVC casing FM, no adjacent fields, no threshold

Root Depth (ft bgs) = 0  
 GS Buffer (ft) =  
 Screen Depth (ft bgs) = 34.3 - 54.3  
 Capillary Rise (ft) = 1  
 Historical GW level (ft bgs) = 50  
 Field Threshold (ft bgs) = 1  
 Threshold Elevation(ft NAVD88) = 68.9

**Influences:**

\* = assumed value  
 bgs = below ground surface  
 NR = not recorded

Last Updated:  
 8/9/2011  
 Preliminary Data

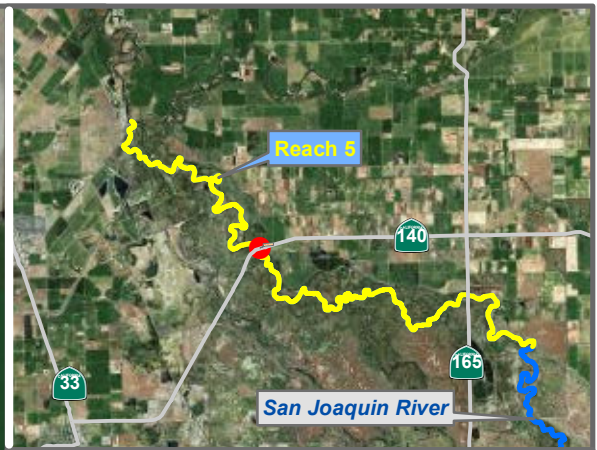
0 500 1,000 2,000 Feet



Groundwater

# Monitoring Location

## MW-09-123



Reach = 5  
 River Mile = 125.1  
 X = -120.9286 Y = 37.3108  
*(Horizontal Datum is NAD83)*  
 Distance From River (ft) = 599  
 Reference Elevation (ft NAVD88) = 70  
 Site = Hwy. 140  
 Land Use = Public Land  
 Protocol Reference = ATR App F Sec 2  
 Agency = USBR  
 Measurements:  
 1. Type = Electronic Sounder Measurement  
    Interval = Monthly  
    Date Range =  
 2. Type =  
    Interval =  
    Date Range =  
 3. Type =  
    Interval =  
    Date Range =

Description:  
 2 inch PVC casing FM, no adjacent fields,  
 no threshold

Root Depth (ft bgs) = 0  
 GS Buffer (ft) =  
 Screen Depth (ft bgs) = 29.5 - 49.5  
 Capillary Rise (ft) = 1  
 Historical GW level (ft bgs) = 50  
 Field Threshold (ft bgs) = 1  
 Threshold Elevation(ft NAVD88) = 68.9

Influences:

\* = assumed value  
 bgs = below ground surface  
 NR = not recorded

Last Updated:  
 8/9/2011  
 Preliminary Data

0 500 1,000 2,000 Feet



Groundwater

# Monitoring Location MW-09-124



Reach = 5  
 River Mile = 125.1  
 X = -120.9151 Y = 37.3140  
 (Horizontal Datum is NAD83)  
 Distance From River (ft) = 3879  
 Reference Elevation (ft NAVD88) = 74.4  
 Site = Hwy. 140  
 Land Use = Alfalfa  
 Protocol Reference = ATR App F Sec 2  
 Agency = USBR  
 Measurements:  
 1. Type = Electronic Sounder Measurement  
 Interval = Monthly  
 Date Range =  
 2. Type =  
 Interval =  
 Date Range =  
 3. Type =  
 Interval =  
 Date Range =

Description:  
 2 inch PVC casing FM

Root Depth (ft bgs) = 4  
 GS Buffer (ft) = 0.0\*  
 Screen Depth (ft bgs) = 29.0 - 49.0  
 Capillary Rise (ft) = 1  
 Historical GW level (ft bgs) = 50  
 Field Threshold (ft bgs) = 5  
 Threshold Elevation(ft NAVD88) = 69.1

Influences:

\* = assumed value  
 bgs = below ground surface  
 NR = not recorded

Last Updated:  
 8/9/2011  
 Preliminary Data

0 500 1,000 2,000 Feet



Groundwater

# Monitoring Location

## MW-09-125