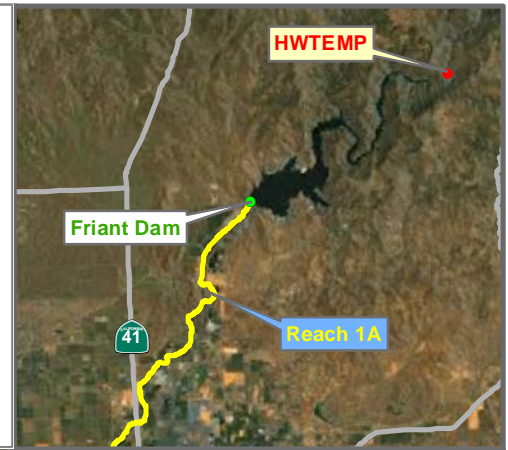
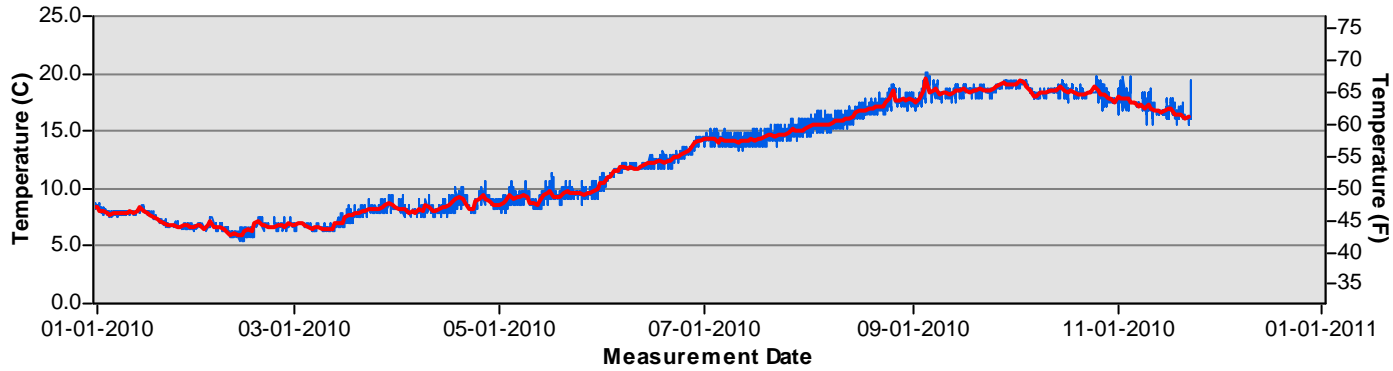


# Reach 0 Temperature Monitoring

### Temperature HWTEMP



### San Joaquin River Restoration Program

Reach 0                      Bank =  
 River Mile = NA  
 Site = Kerckhoff No. 2 Power Plant

Latitude NAD83 = 37.06938  
 Longitude NAD83 = -119.56102

Status = Existing  
 Depth =

15 min from 4/15/2010 on - Datalogger  
 Habitat =  
 Organization = USBR

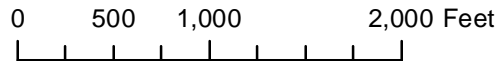
Most Recent Meas. = 11/22/2010

Description:  
 Millerton Inflows at Kerckhoff Power Plant

gs = ground surface  
 ws = water surface

Preliminary  
 Data

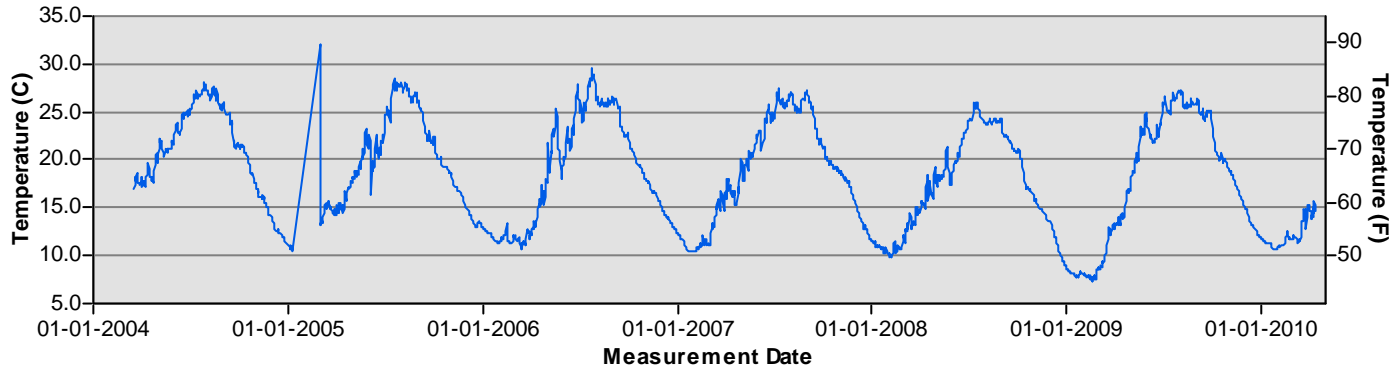
— Hourly temperature (C)  
 — Daily average temperature (C)



# Temperature Monitoring HWTEMP



### Temperature MLSTRNG1



### San Joaquin River Restoration Program

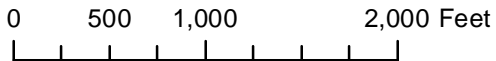
Reach 0                      Bank =  
 River Mile = NA  
 Site = Millerton Lake  
 Latitude (NAD83) = 37.00553  
 Longitude (NAD83) = -119.69492  
 Status = Existing  
 Depth = 5 ft below ws  
 Hour    Datalogger  
 Habitat = Reservoir  
 Organization = USBR  
 Most Recent Meas. = 04/14/2010

Description:  
 1000' upstream from Friant Dam

gs = ground surface  
 ws = water surface

Preliminary  
 Data

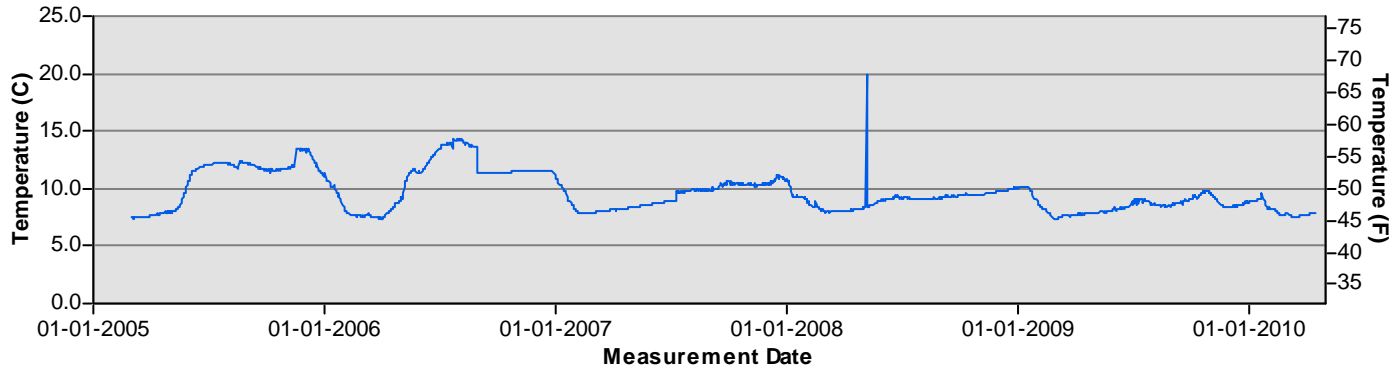
— Hourly temperature (C)  
 — Daily average temperature (C)



# Temperature Monitoring MLSTRNG1



### Temperature MLSTRNG10



### San Joaquin River Restoration Program

Reach 0                      Bank =  
 River Mile = NA  
 Site = Millerton Lake  
 Latitude (NAD83) = 37.00553  
 Longitude (NAD83) = -119.69492

Status = Existing  
 Depth = 120 ft below ws

Hour    Datalogger  
 Habitat = Reservoir  
 Organization = USBR

Most Recent Meas. = 04/14/2010

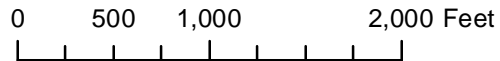
Description:  
 1000' upstream from Friant Dam

gs = ground surface  
 ws = water surface

Preliminary  
 Data



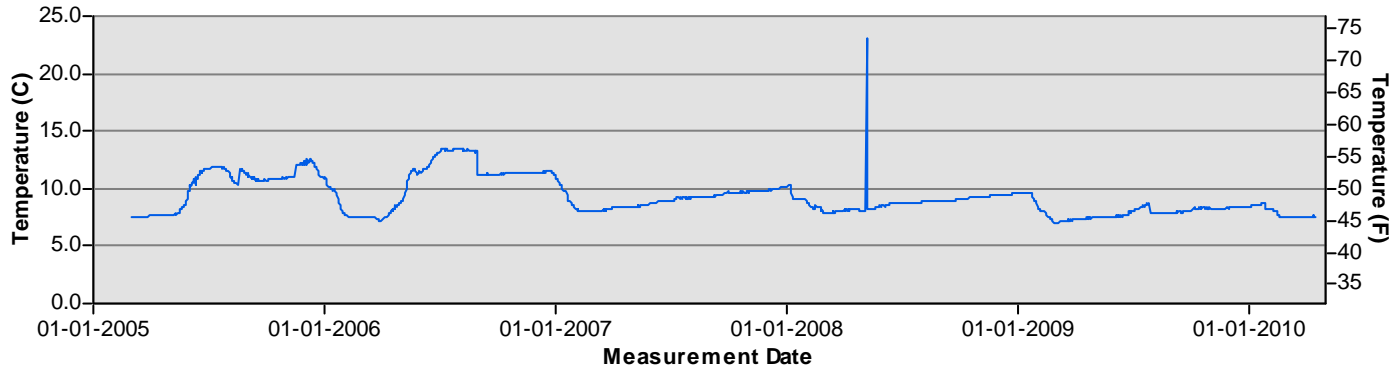
— Hourly temperature (C)  
 — Daily average temperature (C)



# Temperature Monitoring MLSTRNG10



### Temperature MLSTRNG11



### San Joaquin River Restoration Program

Reach 0                      Bank =  
 River Mile = NA  
 Site = Millerton Lake  
 Latitude (NAD83) = 37.00553  
 Longitude (NAD83) = -119.69492

Status = Existing  
 Depth = 150 ft below ws

Hour    Datalogger  
 Habitat = Reservoir  
 Organization = USBR

Most Recent Meas. = 04/14/2010

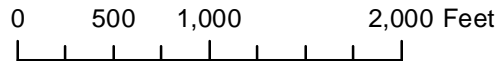
Description:  
 1000' upstream from Friant Dam

gs = ground surface  
 ws = water surface

Preliminary  
 Data



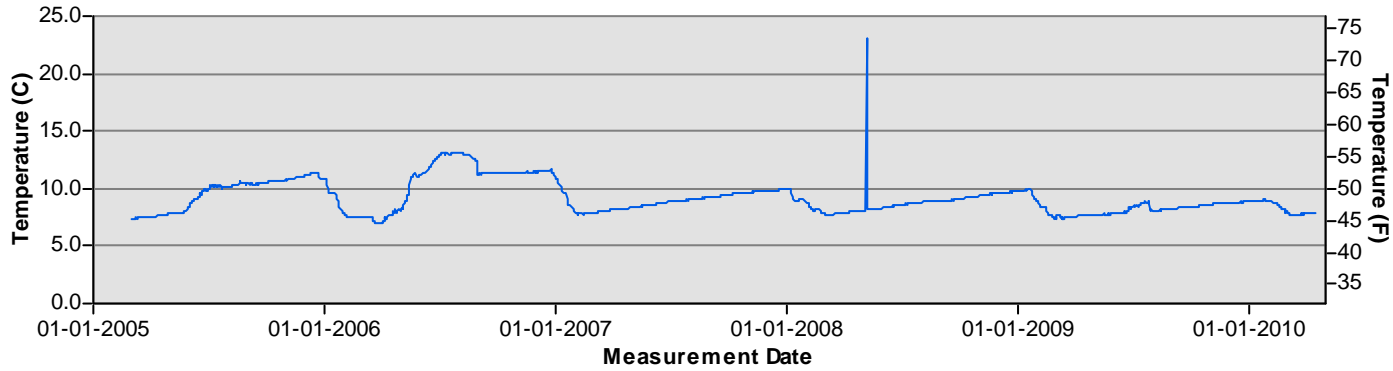
— Hourly temperature (C)  
 — Daily average temperature (C)



# Temperature Monitoring MLSTRNG11



### Temperature MLSTRNG12



### San Joaquin River Restoration Program

Reach 0                      Bank =  
 River Mile = NA  
 Site = Millerton Lake  
 Latitude (NAD83) = 37.00553  
 Longitude (NAD83) = -119.69492

Status = Existing  
 Depth = 180 ft below ws

Hour    Datalogger  
 Habitat = Reservoir  
 Organization = USBR

Most Recent Meas. = 04/14/2010

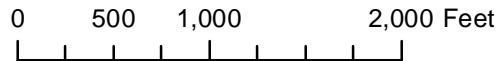
Description:  
 1000' upstream from Friant Dam

gs = ground surface  
 ws = water surface

Preliminary  
 Data



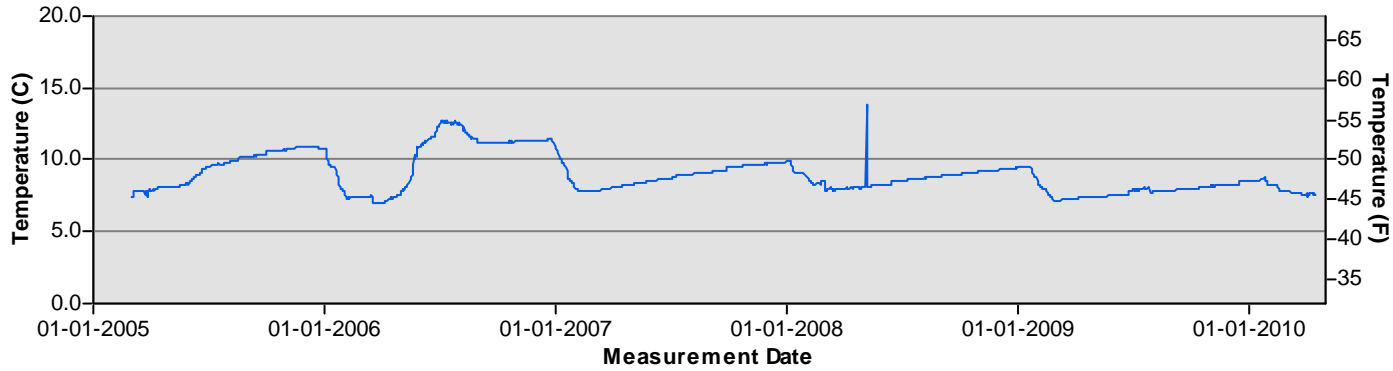
— Hourly temperature (C)  
 — Daily average temperature (C)



# Temperature Monitoring MLSTRNG12



### Temperature MLSTRNG13



### San Joaquin River Restoration Program

Reach 0                      Bank =  
 River Mile = NA  
 Site = Millerton Lake  
 Latitude (NAD83) = 37.00553  
 Longitude (NAD83) = -119.69492  
 Status = Existing  
 Depth = 210 ft below ws

Hour    Datalogger  
 Habitat = Reservoir  
 Organization = USBR

Most Recent Meas. = 04/14/2010

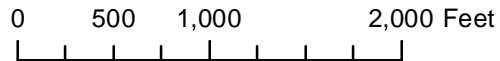
Description:  
 1000' upstream from Friant Dam

gs = ground surface  
 ws = water surface

Preliminary  
 Data



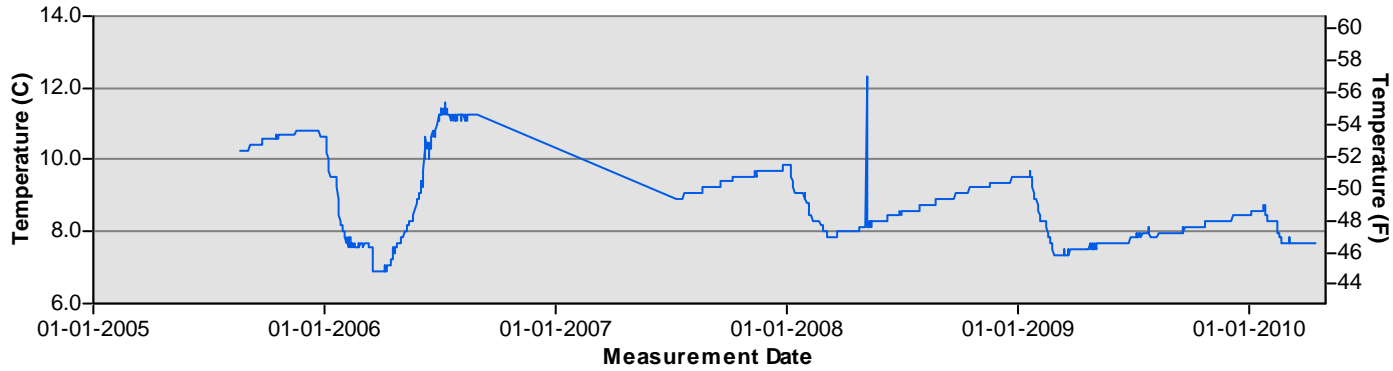
— Hourly temperature (C)  
 — Daily average temperature (C)



# Temperature Monitoring MLSTRNG13



### Temperature MLSTRNG14



### San Joaquin River Restoration Program

Reach 0                      Bank =  
 River Mile = NA  
 Site = Millerton Lake  
 Latitude (NAD83) = 37.00553  
 Longitude (NAD83) = -119.69492  
 Status = Existing  
 Depth = 240 ft below ws  
 Hour    Datalogger  
 Habitat = Reservoir  
 Organization = USBR  
 Most Recent Meas. = 04/14/2010

Description:  
 1000' upstream from Friant Dam

gs = ground surface  
 ws = water surface

Preliminary  
 Data



— Hourly temperature (C)  
 — Daily average temperature (C)

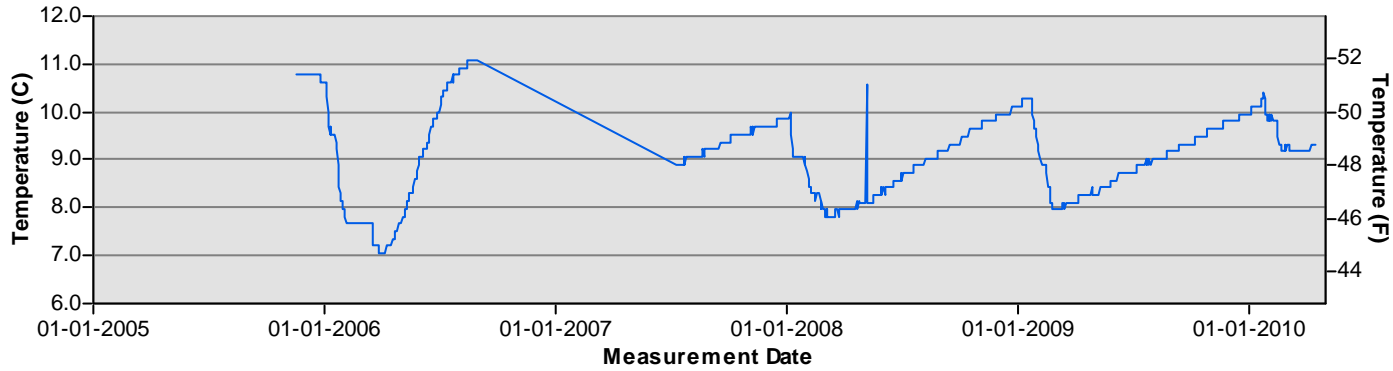
0    500    1,000    2,000 Feet



# Temperature Monitoring MLSTRNG14



### Temperature MLSTRNG15



### San Joaquin River Restoration Program

Reach 0                      Bank =  
 River Mile = NA  
 Site = Millerton Lake  
 Latitude (NAD83) = 37.00553  
 Longitude (NAD83) = -119.69492  
 Status = Existing  
 Depth = 270 ft below ws

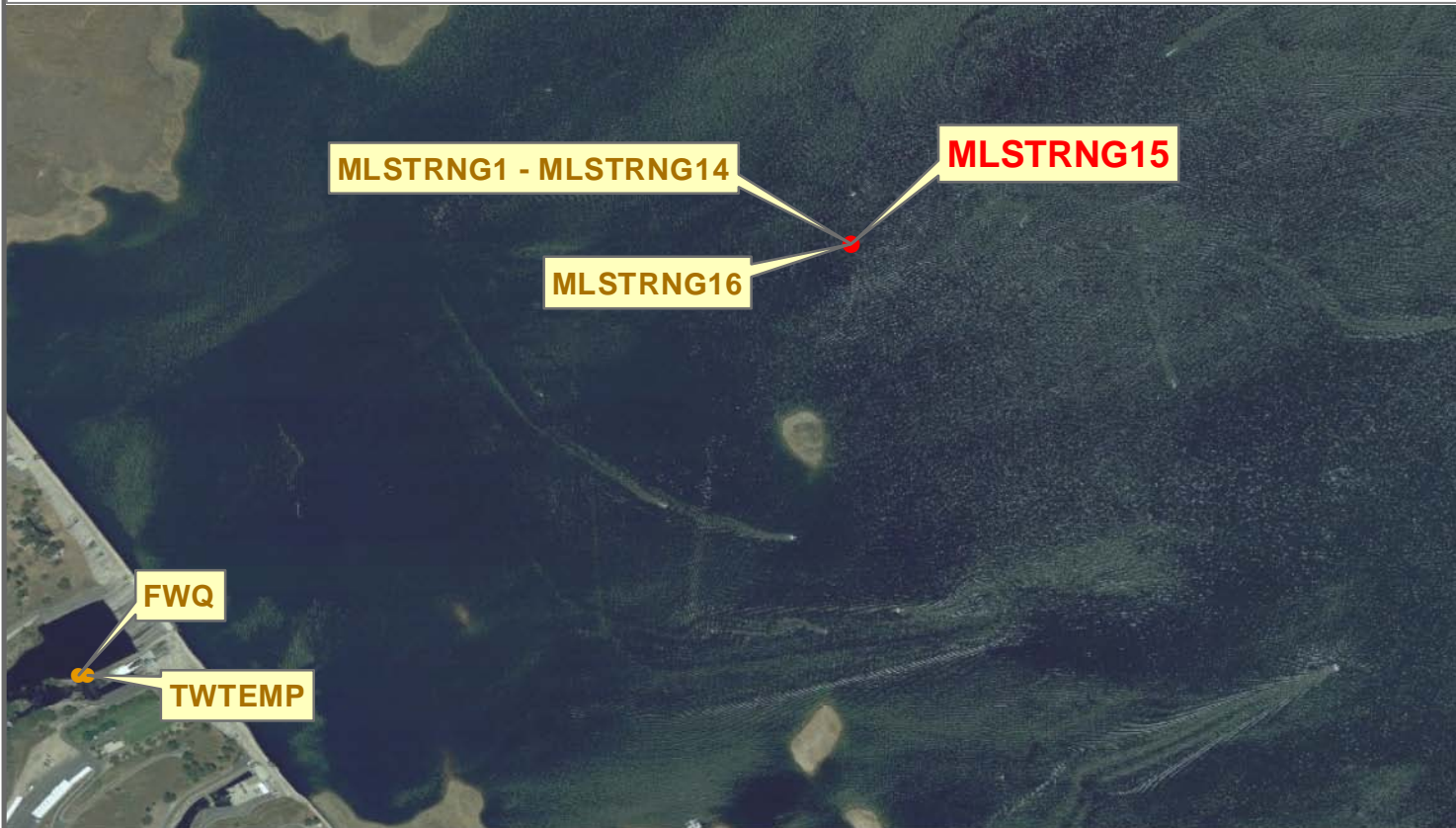
Hour    Datalogger  
 Habitat = Reservoir  
 Organization = USBR

Most Recent Meas. = 04/14/2010

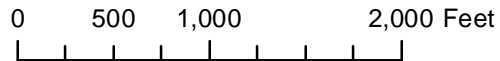
Description:  
 1000' upstream from Friant Dam

gs = ground surface  
 ws = water surface

Preliminary Data



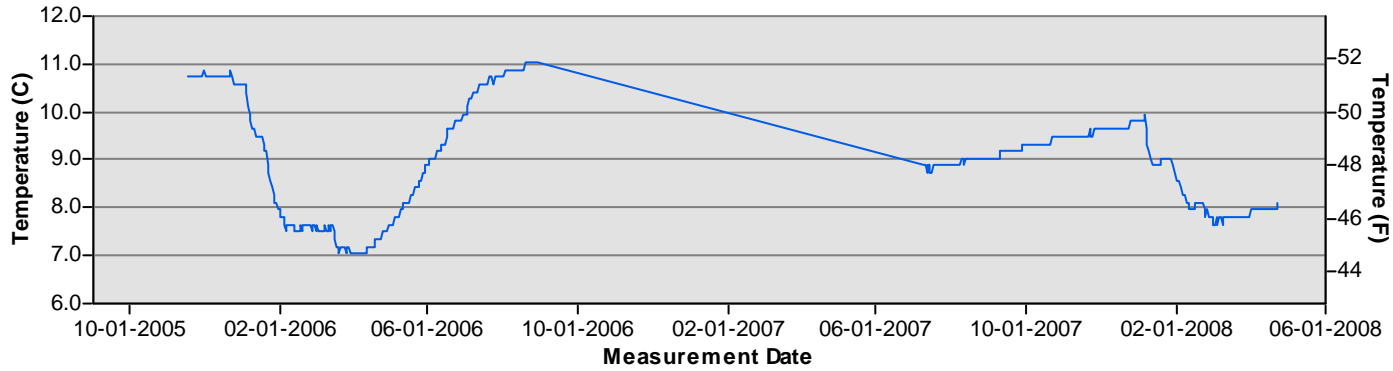
— Hourly temperature (C)  
 — Daily average temperature (C)



# Temperature Monitoring MLSTRNG15



### Temperature MLSTRNG16



### San Joaquin River Restoration Program

Reach 0                      Bank =  
 River Mile = NA  
 Site = Millerton Lake  
 Latitude (NAD83) = 37.00553  
 Longitude (NAD83) = -119.69492

Status = Existing  
 Depth = 300 ft below ws

Hour      Datalogger  
 Habitat = Reservoir  
 Organization = USBR

Most Recent Meas. = 04/23/2008

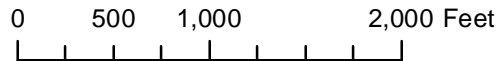
Description:  
 1000' upstream from Friant Dam

gs = ground surface  
 ws = water surface

Preliminary  
 Data



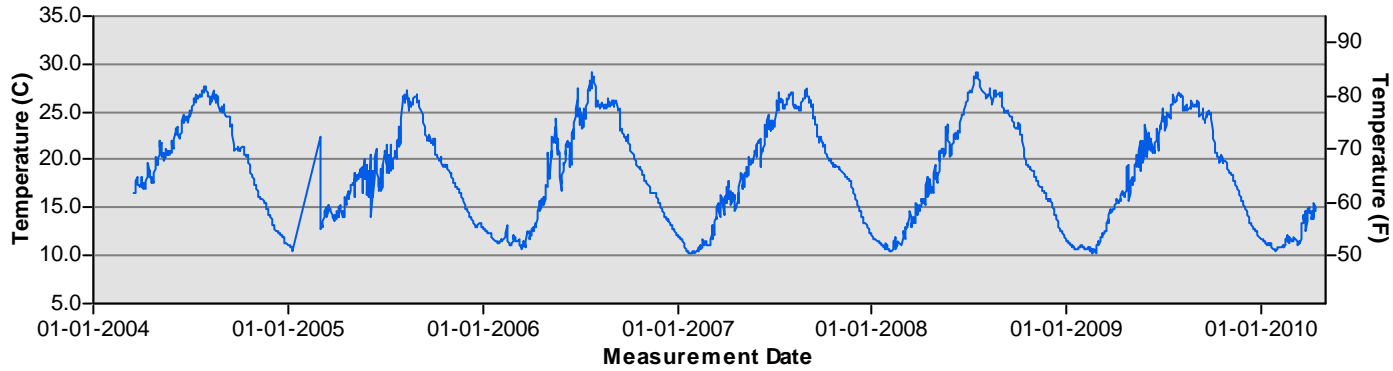
— Hourly temperature (C)  
 — Daily average temperature (C)



# Temperature Monitoring MLSTRNG16



### Temperature MLSTRNG2



### San Joaquin River Restoration Program

Reach 0                      Bank =  
 River Mile = NA  
 Site = Millerton Lake  
 Latitude (NAD83) = 37.00553  
 Longitude (NAD83) = -119.69492

Status = Existing  
 Depth = 10 ft below ws

Hour    Datalogger  
 Habitat = Reservoir  
 Organization = USBR

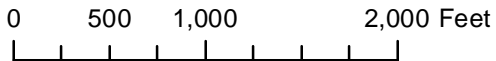
Most Recent Meas. = 04/14/2010

Description:  
 1000' upstream from Friant Dam

gs = ground surface  
 ws = water surface

Preliminary  
 Data

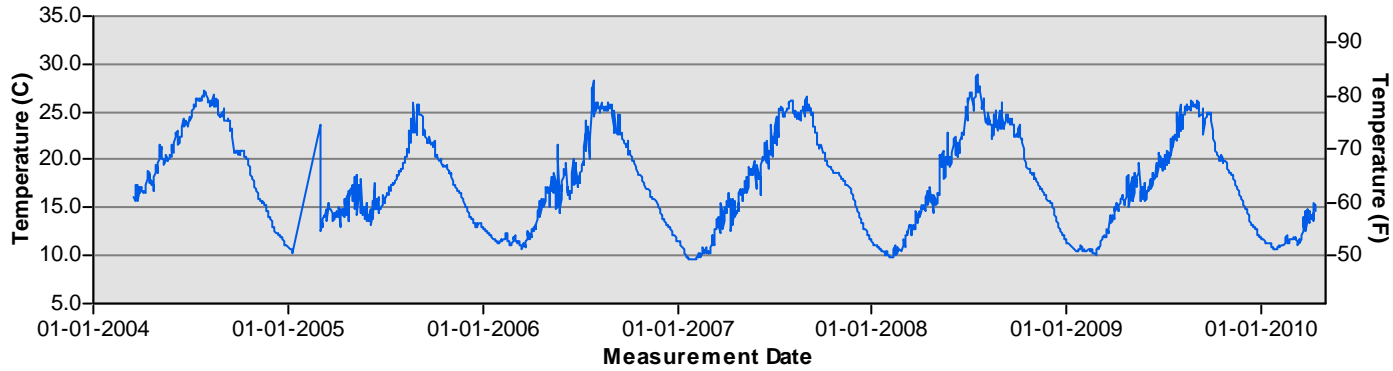
— Hourly temperature (C)  
 — Daily average temperature (C)



# Temperature Monitoring MLSTRNG2



### Temperature MLSTRNG3



### San Joaquin River Restoration Program

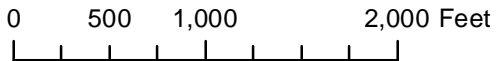
Reach 0                      Bank =  
 River Mile = NA  
 Site = Millerton Lake  
 Latitude (NAD83) = 37.00553  
 Longitude (NAD83) = -119.69492  
 Status = Existing  
 Depth = 15 ft below ws  
 Hour    Datalogger  
 Habitat = Reservoir  
 Organization = USBR  
 Most Recent Meas. = 04/14/2010

Description:  
 1000' upstream from Friant Dam

gs = ground surface  
 ws = water surface

Preliminary  
 Data

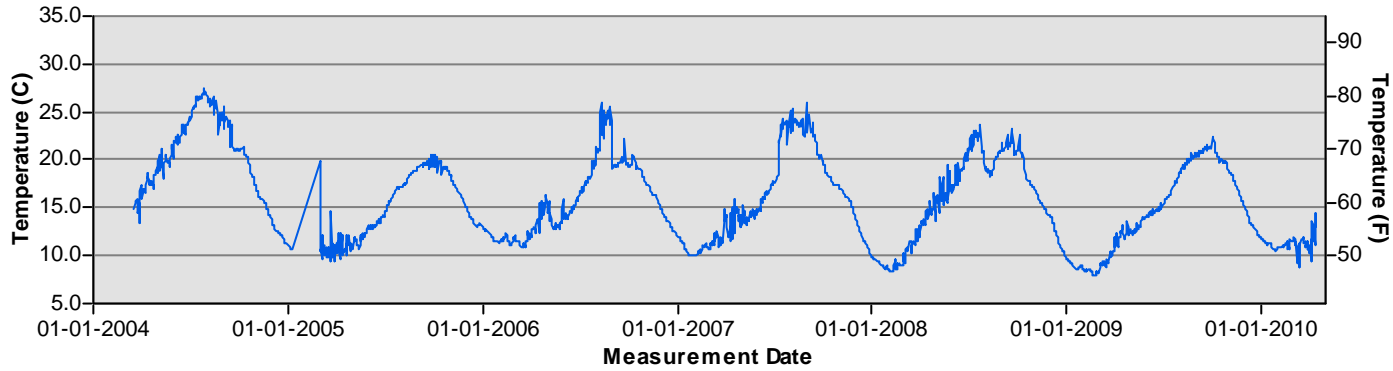
— Hourly temperature (C)  
 — Daily average temperature (C)



# Temperature Monitoring MLSTRNG3



### Temperature MLSTRNG4



### San Joaquin River Restoration Program

Reach 0                      Bank =  
 River Mile = NA  
 Site = Millerton Lake  
 Latitude (NAD83) = 37.00553  
 Longitude (NAD83) = -119.69492

Status = Existing  
 Depth = 20 ft below ws

Hour    Datalogger  
 Habitat = Reservoir  
 Organization = USBR

Most Recent Meas. = 04/14/2010

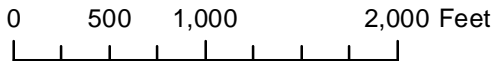
Description:  
 1000' upstream from Friant Dam

gs = ground surface  
 ws = water surface

Preliminary  
 Data



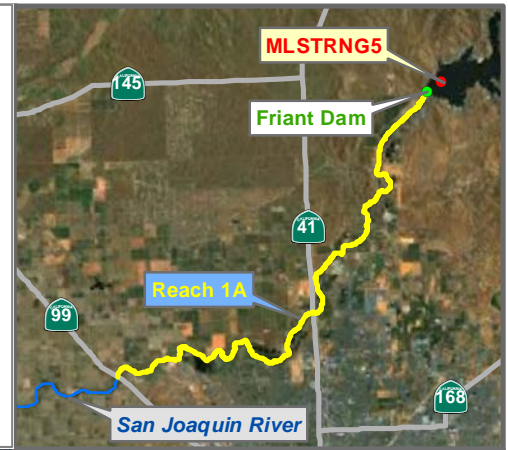
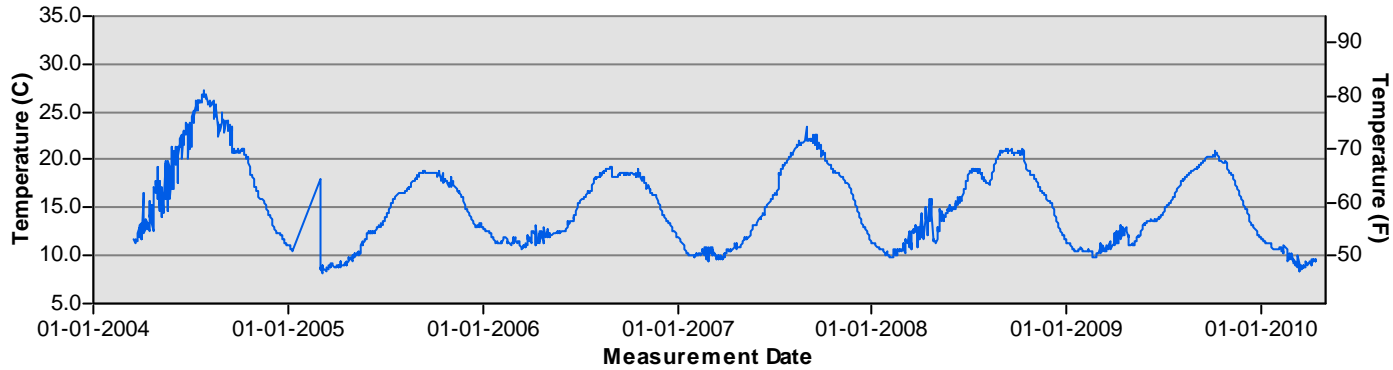
— Hourly temperature (C)  
 — Daily average temperature (C)



# Temperature Monitoring MLSTRNG4



### Temperature MLSTRNG5



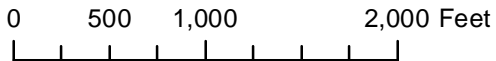
### San Joaquin River Restoration Program

Reach 0                      Bank =  
 River Mile = NA  
 Site = Millerton Lake  
 Latitude NAD83 = 37.00553  
 Longitude NAD83 = -119.69492  
 Status = Existing  
 Depth = 30 ft below ws  
 Hour    Datalogger  
 Habitat = Reservoir  
 Organization = USBR  
 Most Recent Meas. = 04/14/2010  
 Description:  
 1000' upstream from Friant Dam

gs = ground surface  
ws = water surface

Preliminary Data

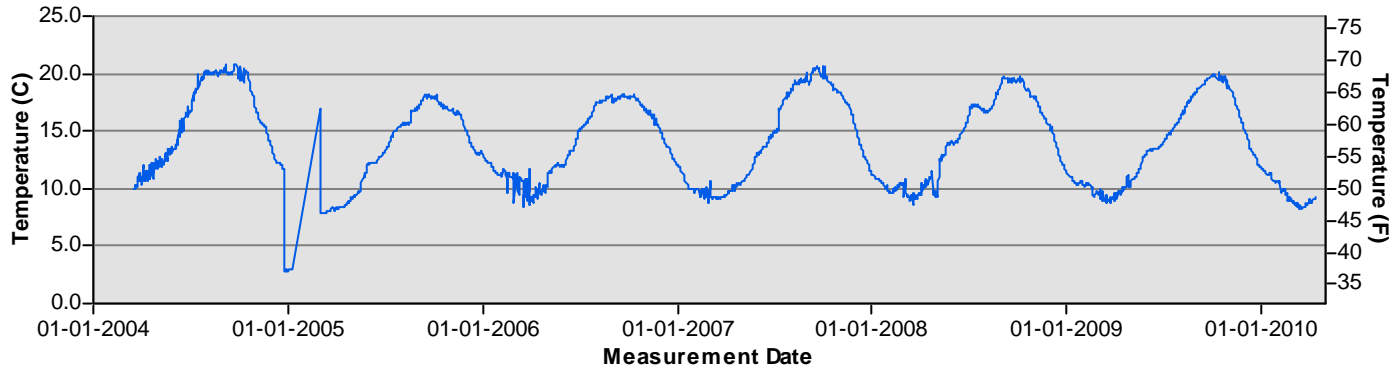
— Hourly temperature (C)  
— Daily average temperature (C)



# Temperature Monitoring MLSTRNG5



### Temperature MLSTRNG6



### San Joaquin River Restoration Program

Reach 0                      Bank =  
 River Mile = NA  
 Site = Millerton Lake  
 Latitude (NAD83) = 37.00553  
 Longitude (NAD83) = -119.69492

Status = Existing  
 Depth = 45 ft below ws

Hour    Datalogger  
 Habitat = Reservoir  
 Organization = USBR

Most Recent Meas. = 04/14/2010

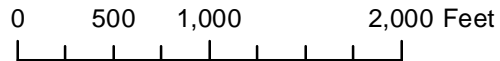
Description:  
 1000' upstream from Friant Dam

gs = ground surface  
 ws = water surface

Preliminary  
 Data



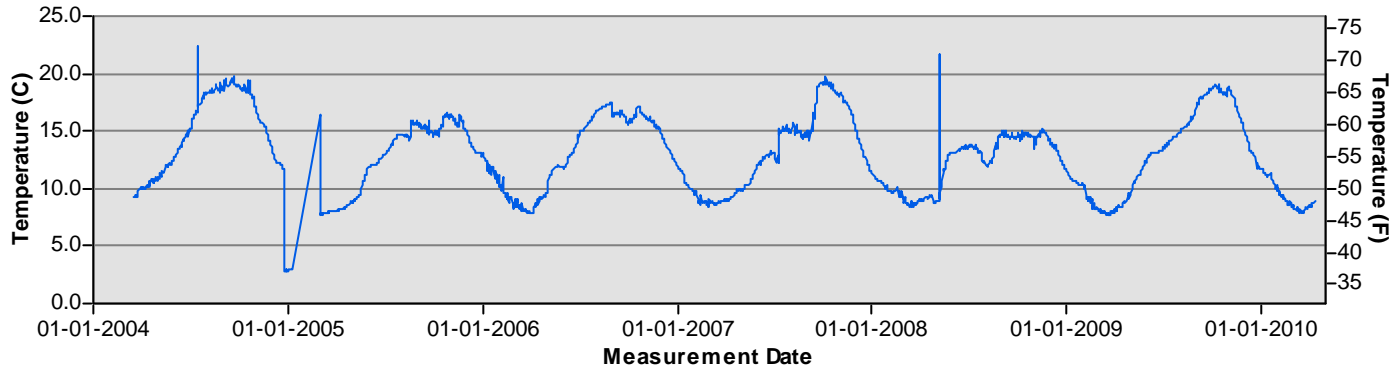
— Hourly temperature (C)  
 — Daily average temperature (C)



# Temperature Monitoring MLSTRNG6



### Temperature MLSTRNG7



### San Joaquin River Restoration Program

Reach 0                      Bank =  
 River Mile = NA  
 Site = Millerton Lake

Latitude (NAD83) = 37.00553  
 Longitude (NAD83) = -119.69492

Status = Existing  
 Depth = 60 ft below ws

Hour    Datalogger  
 Habitat = Reservoir  
 Organization = USBR

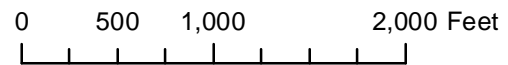
Most Recent Meas. = 04/14/2010

Description:  
 1000' upstream from Friant Dam

gs = ground surface  
 ws = water surface

Preliminary  
 Data

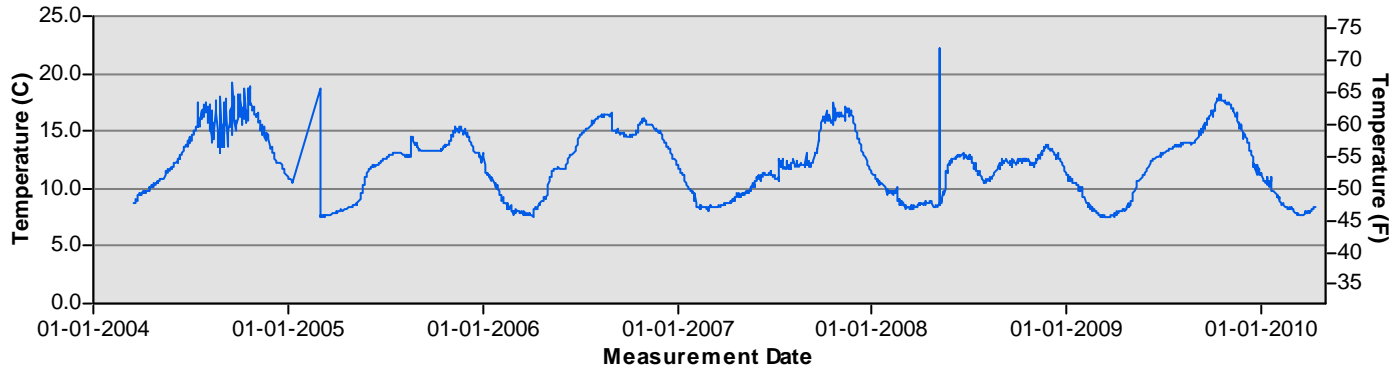
— Hourly temperature (C)  
 — Daily average temperature (C)



# Temperature Monitoring MLSTRNG7



### Temperature MLSTRNG8



### San Joaquin River Restoration Program

Reach 0                      Bank =  
 River Mile = NA  
 Site = Millerton Lake  
 Latitude (NAD83) = 37.00553  
 Longitude (NAD83) = -119.69492  
 Status = Existing  
 Depth = 75 ft below ws

Hour    Datalogger  
 Habitat = Reservoir  
 Organization = USBR

Most Recent Meas. = 04/14/2010

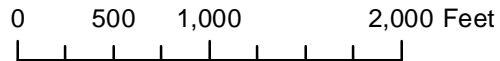
Description:  
 1000' upstream from Friant Dam

gs = ground surface  
 ws = water surface

Preliminary  
 Data



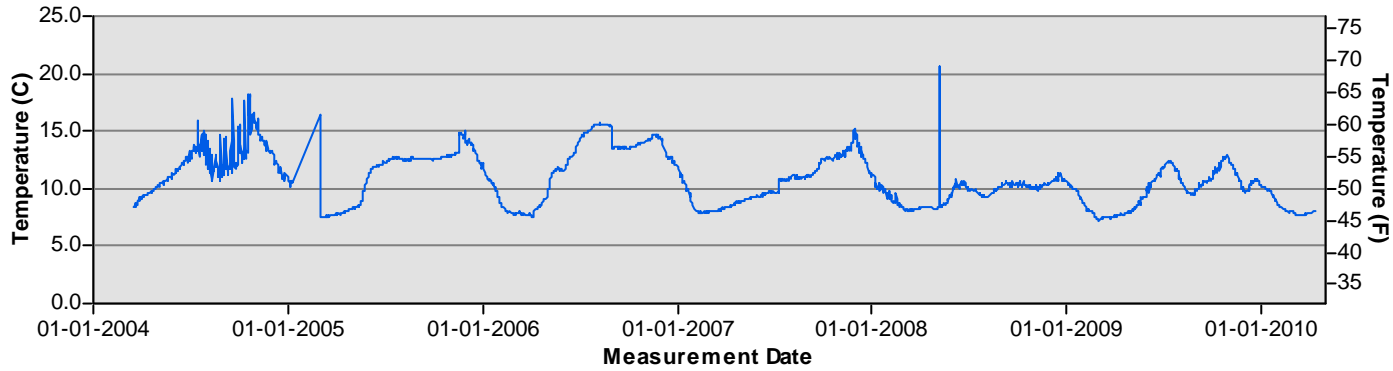
— Hourly temperature (C)  
 — Daily average temperature (C)



# Temperature Monitoring MLSTRNG8



### Temperature MLSTRNG9



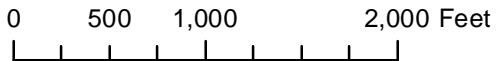
### San Joaquin River Restoration Program

Reach 0                      Bank =  
 River Mile = NA  
 Site = Millerton Lake  
 Latitude (NAD83) = 37.00553  
 Longitude (NAD83) = -119.69492  
 Status = Existing  
 Depth = 90 ft below ws  
 Hour    Datalogger  
 Habitat = Reservoir  
 Organization = USBR  
 Most Recent Meas. = 04/14/2010  
 Description:  
 1000' upstream from Friant Dam

gs = ground surface  
ws = water surface

Preliminary Data

— Hourly temperature (C)  
— Daily average temperature (C)



# Temperature Monitoring MLSTRNG9

