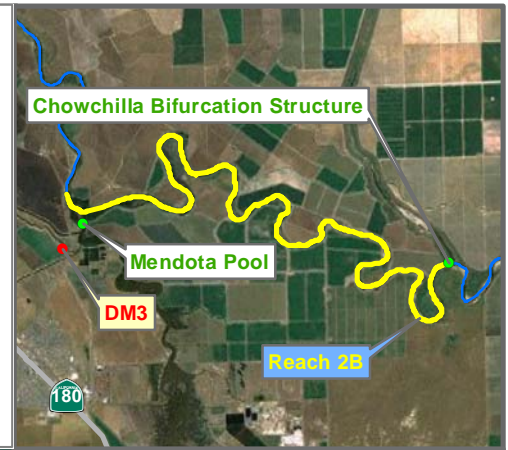
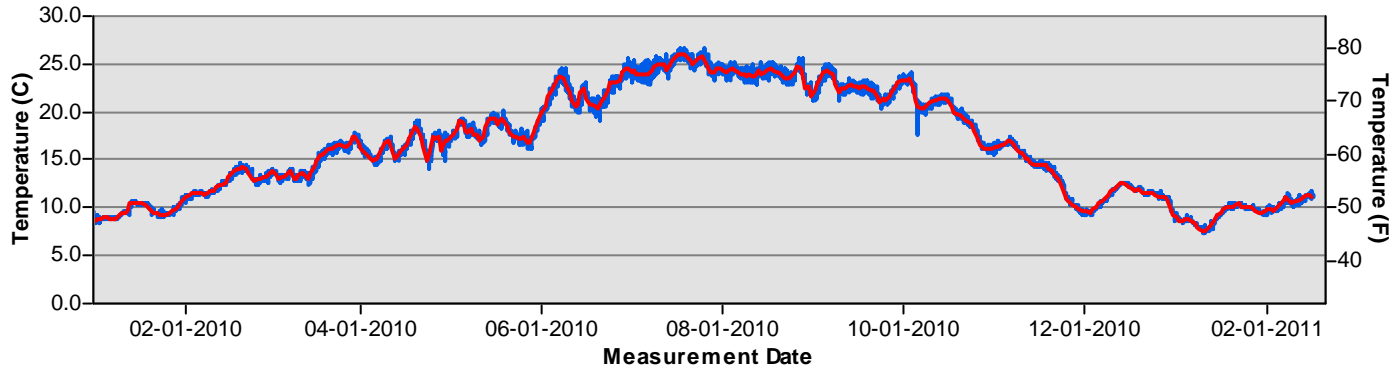




# Reach 2B Temperature Monitoring

### Temperature DM3



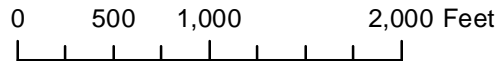
### San Joaquin River Restoration Program

Reach 2B                      Bank =  
 River Mile =  
 Site = Delta Mendota Canal Check 21  
 Latitude (NAD83) = 36.778  
 Longitude (NAD83) = -120.374  
 Status = Existing  
 Depth =  
 Hour    Telemetry  
 Habitat =  
 Organization = USBR  
 Most Recent Meas. = 02/16/2011  
 Description:  
 Sensor at real-time flow gaging station

gs = ground surface  
 ws = water surface

Preliminary  
 Data

— Hourly temperature (C)  
 — Daily average temperature (C)



# Temperature Monitoring DM3

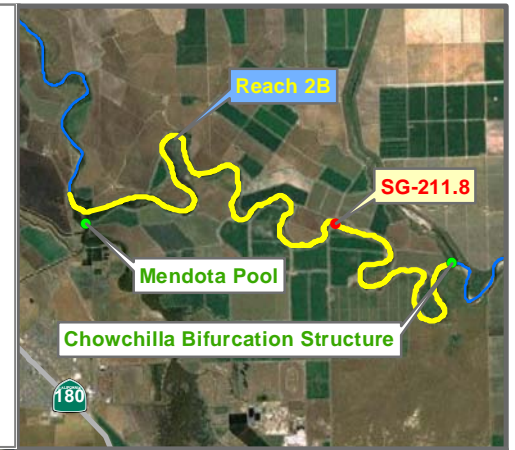


# Temperature SG-211.8

Temperature (C)

Temperature Measurements Not Yet Processed

Measurement Date



## San Joaquin River Restoration Program

Reach 2B Bank = Left  
 River Mile = 211.8  
 Site = San Mateo Ave.

Latitude NAD83 = 36.781494  
 Longitude NAD83 = -120.311925

Status = Existing  
 Depth =

Hour? Datalogger  
 Habitat =  
 Organization = USBR

Description:

gs = ground surface  
 ws = water surface

Preliminary Data

— Hourly temperature (C)  
 — Daily average temperature (C)

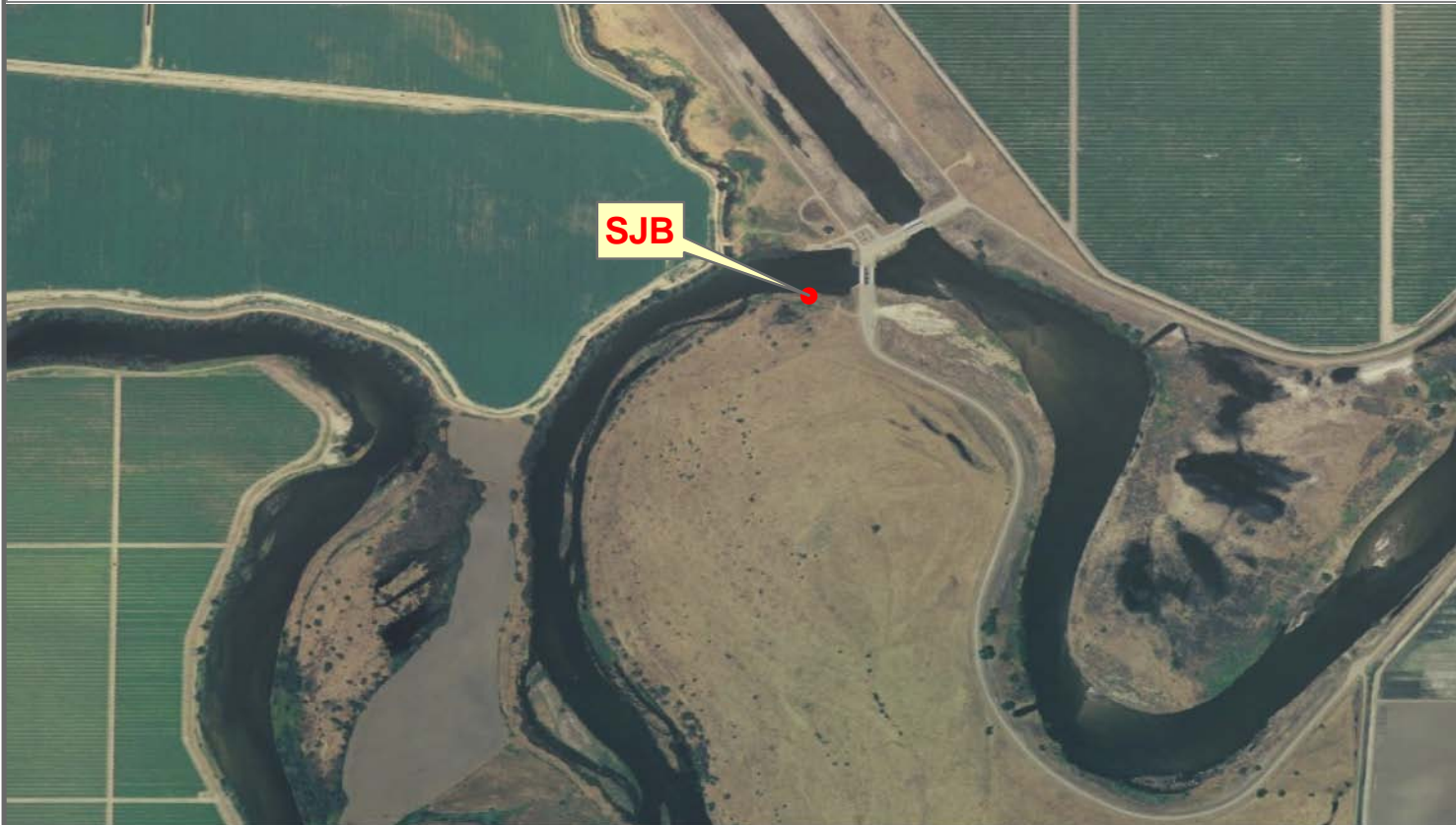
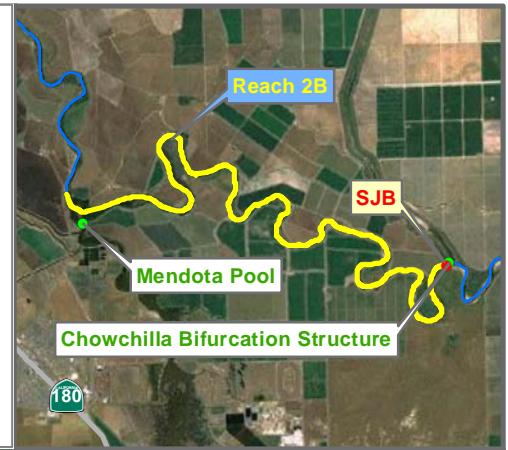
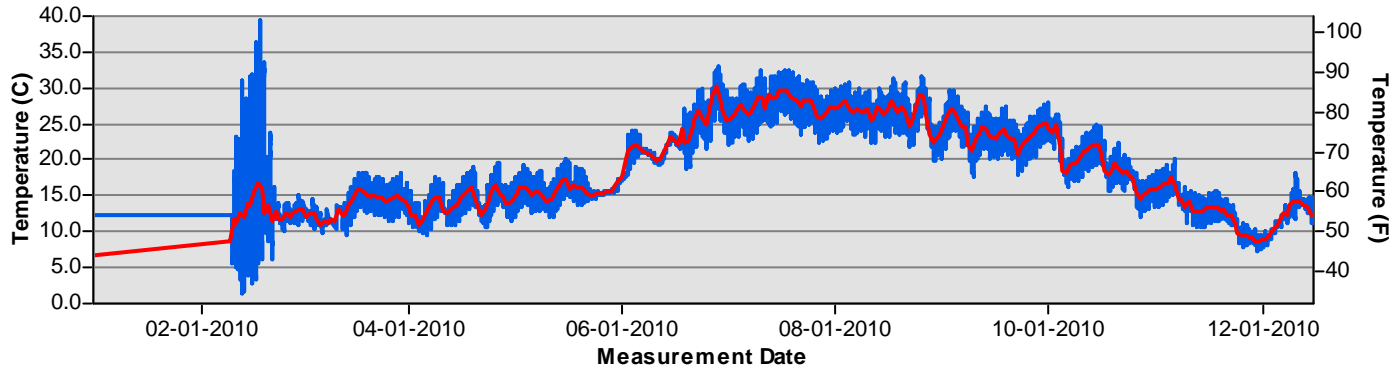
0 500 1,000 2,000 Feet



# Temperature Monitoring SG-211.8



### Temperature SJB



### San Joaquin River Restoration Program

Reach 2B                      Bank =  
 River Mile =  
 Site = Below Bifurcation

Latitude (NAD83) = 36.773  
 Longitude (NAD83) = -120.286

Status = Existing  
 Depth =

15 min Telemetry  
 Habitat =  
 Organization = USBR

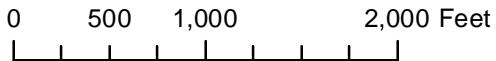
Most Recent Meas. = 12/15/2010

Description:  
 Sensor at real-time flow gaging station

gs = ground surface  
 ws = water surface

Preliminary  
 Data

— Hourly temperature (C)  
 — Daily average temperature (C)



# Temperature Monitoring SJB

