

Reach 4A

Temperature Monitoring Sites

SAN JOAQUIN RIVER
RESTORATION PROGRAM



RECLAMATION
Managing Water in the West



Preliminary Data

Last Updated: 6/28/2012



Reach = 4A
 River Mile = 173.9
 Merced County
 Right Bank

X = -120.5391 Y = 37.0663 Status = Existing
 (Horizontal Datum is NAD83)
 Distance From River (ft)= 4977
 Reference Elevation (ft NAVD88) = 114.84
 Site = Hwy. 152

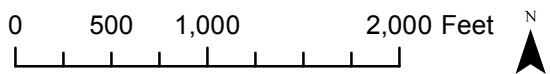
Agency = USBR
 Measurements:
 Type = Datalogger
 Interval = Hourly
 Timeseries unavailable

Description:
 2 inch PVC casing FM

Ground Surface Elevation (ft) = 114.80
 Monitoring Depth (ft) = 51.5 - 61.5 ft below gs

MW-09-84

MW-09-83

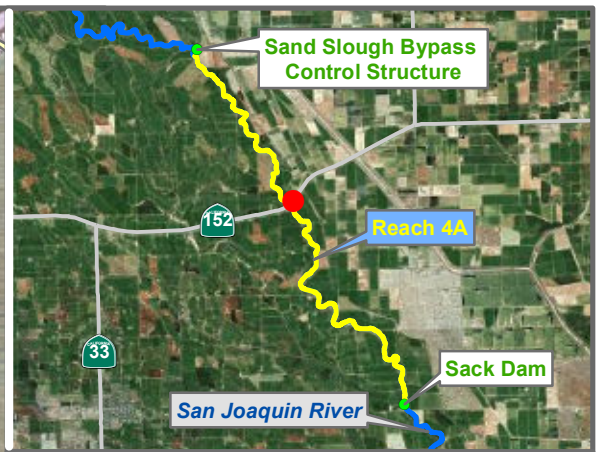


Temperature

Monitoring Location MW-09-83

* = assumed value
 bgs = below ground surface
 NR = not recorded

Last Updated:
6/28/2012
Preliminary Data



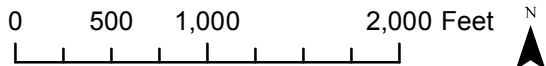
Reach = 4A
 River Mile = 173.9
 Merced County
 Right Bank

X = -120.5477 Y = 37.0574 Status = Existing
 (Horizontal Datum is NAD83)
 Distance From River Centerline (ft)=
 Reference Elevation (ft NAVD88) = 115.70
 Site = Hwy. 152

Agency = USBR
 Measurements:
 Type = Datalogger
 Interval = Hourly
 Timeseries unavailable

Description:
 2 inch PVC casing FM

Ground Surface Elevation (ft) = 115.80
 Monitoring Depth (ft) = 32.0 - 52.0 ft below gs



 Temperature

Monitoring Location MW-09-84

* = assumed value
 bgs = below ground surface
 NR = not recorded



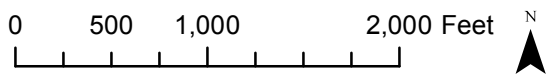
Reach = 4A
 River Mile = 173.9
 Merced County
 Right Bank

X = -120.5492 Y = 37.0564 Status = Existing
 (Horizontal Datum is NAD83)
 Distance From River Centerline (ft) = 285
 Reference Elevation (ft NAVD88) = 120.70
 Site = Hwy. 152

Agency = USBR
 Measurements:
 Type = Datalogger
 Interval = Hourly
 Timeseries unavailable

Description:
 2 inch PVC casing FM

Ground Surface Elevation (ft) = 120.80
 Monitoring Depth (ft) = 52.0 - 82.0 ft below gs



Monitoring Location MW-09-85



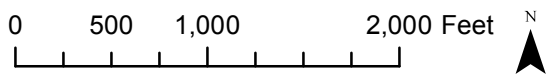
Reach = 4A
 River Mile = 173.9
 Merced County
 Right Bank

X = -120.5492 Y = 37.0564 Status = Existing
 (Horizontal Datum is NAD83)
 Distance From River Centerline (ft) = 285
 Reference Elevation (ft NAVD88) = 120.50
 Site = Hwy. 152

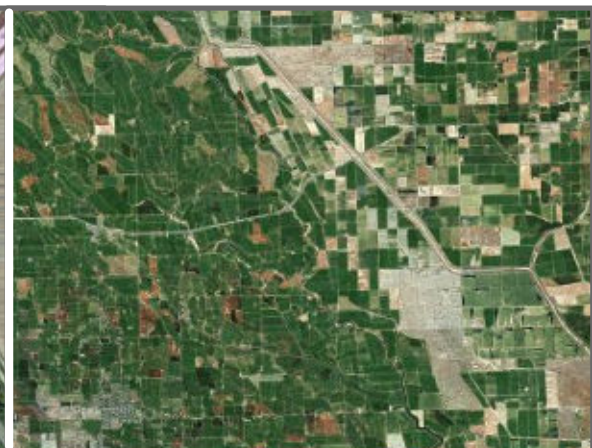
Agency = USBR
 Measurements:
 Type = Datalogger
 Interval = Hourly
 Timeseries unavailable

Description:
 2 inch PVC casing FM

Ground Surface Elevation (ft) = 120.60
 Monitoring Depth (ft) = 9.5 - 29.5 ft below gs



Monitoring Location MW-09-85B



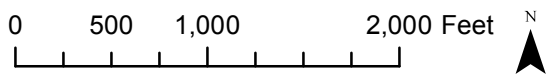
Reach = 4A
 River Mile = 173.9
 Merced County
 Left Bank

X = -120.5506 Y = 37.0556 Status = Existing
 (Horizontal Datum is NAD83)
 Distance From River Centerline (ft) = 287
 Reference Elevation (ft NAVD88) = 120.90
 Site = Hwy. 152

Agency = USBR
 Measurements:
 Type = Datalogger
 Interval = Hourly
 Timeseries unavailable

Description:
 2 inch PVC casing FM

Ground Surface Elevation (ft) = 121.00
 Monitoring Depth (ft) = 52.0 - 72.0 ft below gs



Monitoring Location MW-09-86



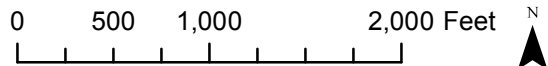
Reach = 4A
 River Mile = 173.9
 Merced County
 Left Bank

X = -120.5540 Y = 37.0542 Status = Existing
 (Horizontal Datum is NAD83)
 Distance From River Centerline (ft)=
 Reference Elevation (ft NAVD88) = 114.90
 Site = Hwy. 152

Agency = USBR
 Measurements:
 Type = Datalogger
 Interval = Hourly
 Timeseries unavailable

Description:
 2 inch PVC casing FM

Ground Surface Elevation (ft) = 115.03
 Monitoring Depth (ft) = 37.0 - 47.0 ft below gs



Temperature

Monitoring Location MW-09-87

* = assumed value
 bgs = below ground surface
 NR = not recorded



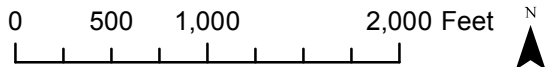
Reach = 4A
 River Mile = 173.9
 Status = Existing
 (Horizontal Datum is NAD83)
 Distance From River (ft) = 6557
 Reference Elevation (ft NAVD88) = 111.80
 Site = Hwy. 152

Merced County
 Left Bank

Agency = USBR
 Measurements:
 Type = Datalogger
 Interval = Hourly
 Timeseries unavailable

Description:
 2 inch PVC casing FM

Ground Surface Elevation (ft) = 112.00
 Monitoring Depth (ft) = 25.0 - 45.0 ft below gs



Temperature

Monitoring Location MW-09-88

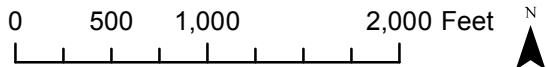


Reach = 4A
 River Mile = 176.2
 X = -120.5432 Y = 37.0310 Status = Existing
 (Horizontal Datum is NAD83)
 Distance From River (ft) = 255
 Reference Elevation (ft NAVD88) = 120.00
 Site = TBD

Agency = USBR
 Measurements:
 Type = Datalogger
 Interval = Hourly
 Timeseries unavailable

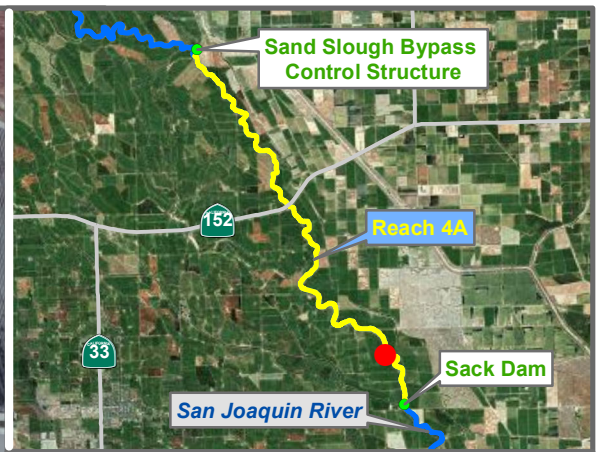
Description:
 2 inch PVC casing AG

Ground Surface Elevation (ft) = 116.90
 Monitoring Depth (ft) = 8.6-13.6 ft below gs



 Temperature

Monitoring Location MW-10-188



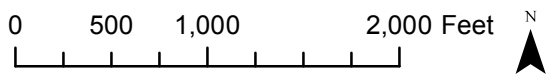
Reach = 4A
 River Mile = 179.9
 Madera County
 Right Bank

X = -120.5082 Y = 37.0015 Status = Existing
 (Horizontal Datum is NAD83)
 Distance From River (ft) = 125
 Reference Elevation (ft NAVD88) = 127.50
 Site = TBD

Agency = USBR
 Measurements:
 Type = Datalogger
 Interval = Hourly
 Timeseries unavailable

Description:
 2 inch PVC casing AG

Ground Surface Elevation (ft) = 124.90
 Monitoring Depth (ft) = 10-25 ft below gs



Monitoring Location MW-10-80

* = assumed value
 bgs = below ground surface
 NR = not recorded

Last Updated:
 6/28/2012
 Preliminary Data



Reach = 4A
River Mile = 176.4
Madera County
Right Bank

X = -120.5445 Y = 37.0279 Status = Existing
(Horizontal Datum is NAD83)
Distance From River (ft) = 259
Reference Elevation (ft NAVD88) = 121.50
Site = TBD

Agency = USBR
Measurements:
Type = Realtime
Interval = Hourly
Timeseries unavailable

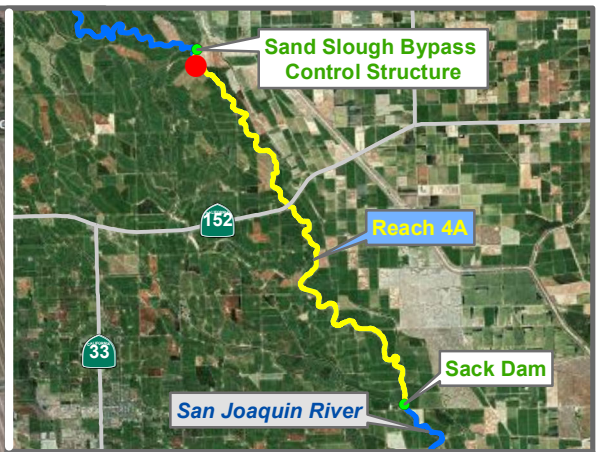
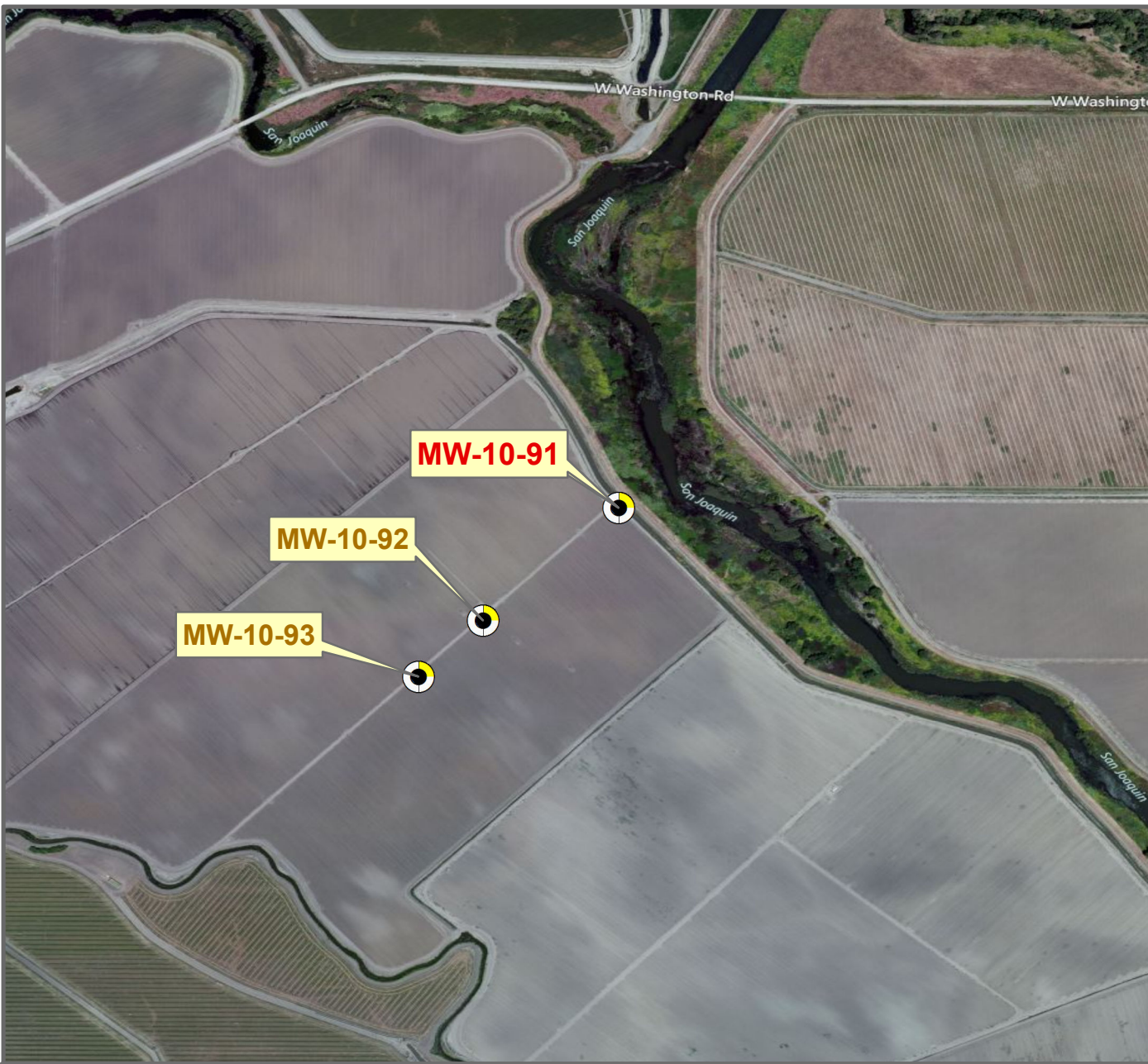
Description:
2 inch PVC casing AG

Ground Surface Elevation (ft) = 118.80
Monitoring Depth (ft) = 10-25 ft below gs



 Temperature

Monitoring Location MW-10-89



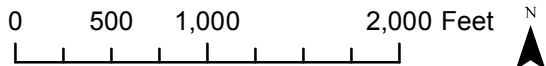
Reach = 4A
 River Mile = 168.9
 Merced County
 Left Bank


X = -120.5893 Y = 37.1063 Status = Existing
 (Horizontal Datum is NAD83)
 Distance From River (ft) = 380
 Reference Elevation (ft NAVD88) = 109.90
 Site = San Juan Ranch

Agency = USBR
 Measurements:
 Type = Datalogger
 Interval = Hourly
 Timeseries unavailable

Description:
 2 inch PVC casing AG

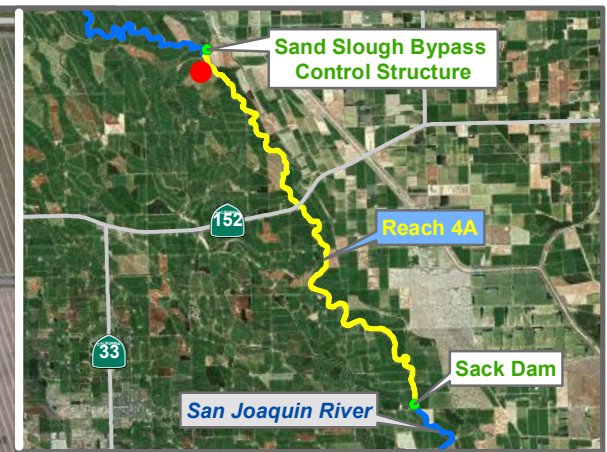
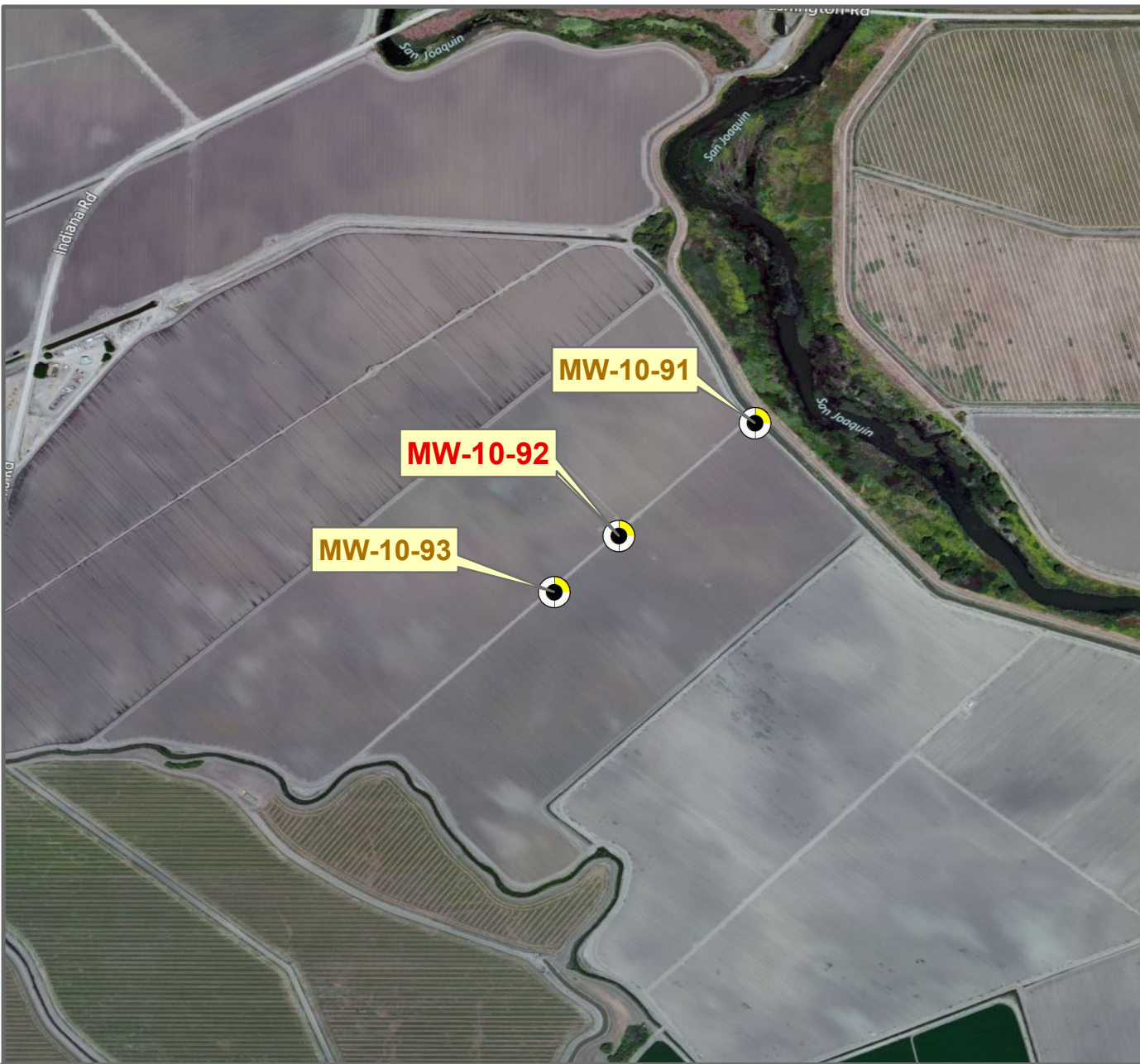
Ground Surface Elevation (ft) = 107.20
 Monitoring Depth (ft) = 12.8 - 27.8 ft below gs



 Temperature

Monitoring Location MW-10-91

* = assumed value
 bgs = below ground surface
 NR = not recorded



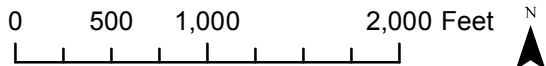
Reach = 4A
 River Mile = 168.9
 Merced County
 Left Bank


X = -120.5917 Y = 37.1043 Status = Existing
 (Horizontal Datum is NAD83)
 Distance From River (ft)= 1399
 Reference Elevation (ft NAVD88) = 107.40
 Site = San Juan Ranch

Agency = USBR
 Measurements:
 Type = Realtime
 Interval = Hourly
 Timeseries unavailable

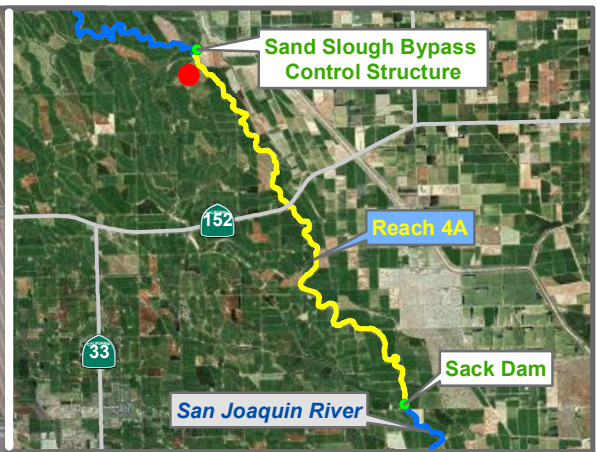
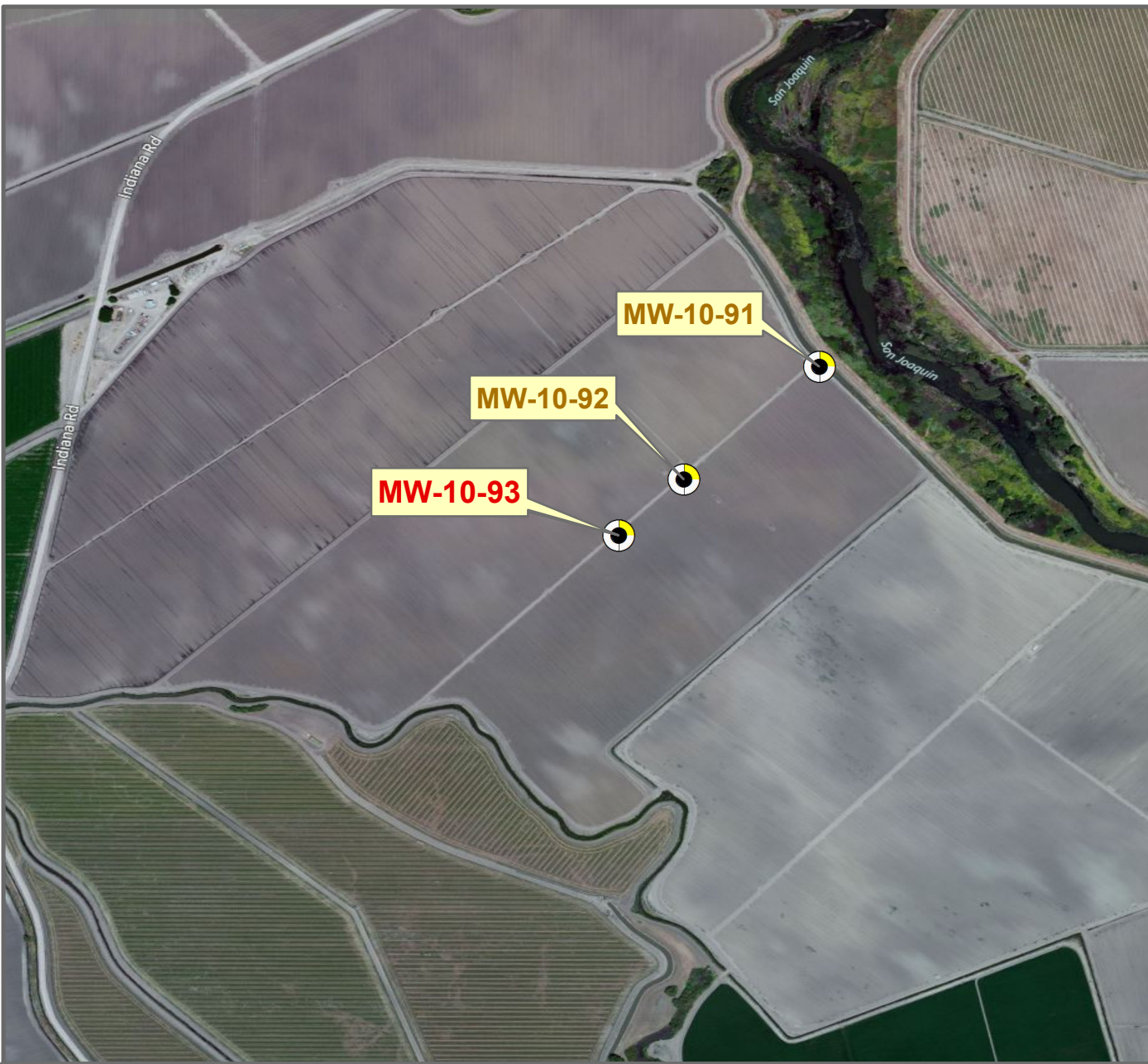
Description:
 2 inch PVC casing AG

Ground Surface Elevation (ft) = 106.00
 Monitoring Depth (ft) = 10.2-25.2 ft below gs



 Temperature

Monitoring Location MW-10-92



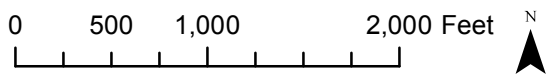
Reach = 4A
 River Mile = 168.9
 Merced County
 Left Bank

X = -120.5928 Y = 37.1034 Status = Existing
 (Horizontal Datum is NAD83)
 Distance From River (ft) = 1908
 Reference Elevation (ft NAVD88) = 108.50
 Site = San Juan Ranch

Agency = USBR
 Measurements:
 Type = Datalogger
 Interval = Hourly
 Timeseries unavailable

Description:
 2 inch PVC casing AG

Ground Surface Elevation (ft) = 105.40
 Monitoring Depth (ft) = 8.5 - 23.5 ft below gs



Monitoring Location MW-10-93

* = assumed value
 bgs = below ground surface
 NR = not recorded

Last Updated:
 6/28/2012
 Preliminary Data



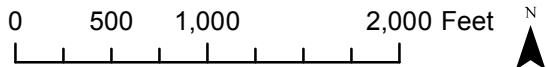
Reach = 4A
 River Mile = 181.1
 Fresno County
 Left Bank


X = -120.5015 Y = 36.9940 Status = Existing
 (Horizontal Datum is NAD83)
 Distance From River (ft) = 113
 Reference Elevation (ft NAVD88) =
 Site = Near Dos Palos

Agency = DWR
 Measurements:
 Type = Telemetry
 Interval = 15 min
 Date Range = 12/3/2009 - 5/8/2012

Description:
 Sensor at real-time flow gaging station

Ground Surface Elevation (ft) =
 Monitoring Depth (ft) =



 Temperature

Monitoring Location SDP



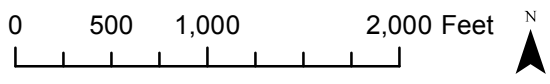
Reach = 4A
 River Mile = 182.0
 Fresno County
 Left Bank

X = -120.5000 Y = 36.9851 Status = Lost
 (Horizontal Datum is NAD83)
 Distance From River (ft) = 4
 Reference Elevation (ft NAVD88) =
 Site = Sack Dam

Agency = DFG
 Measurements:
 Type = Datalogger
 Interval = Hourly
 Date Range = 3/4/2009 - 12/1/2010

Description:
 Downstream of dam. Cabled to rebar in MC. data lost during IFP 2010. Data lost during IFP 2010.

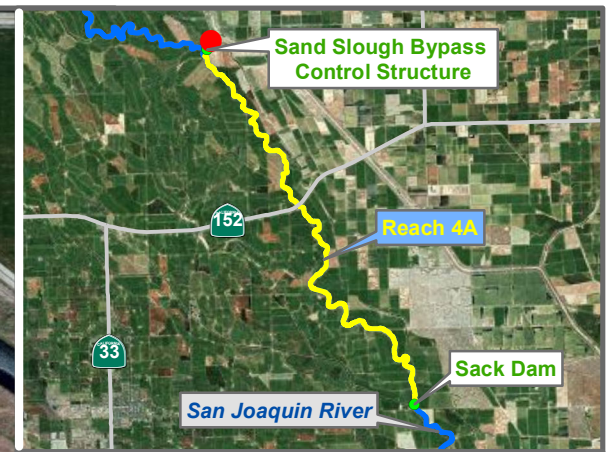
Ground Surface Elevation (ft) =
 Monitoring Depth (ft) = 1 ft above gs



Temperature

Monitoring Location SJRSD

* = assumed value
 bgs = below ground surface
 NR = not recorded

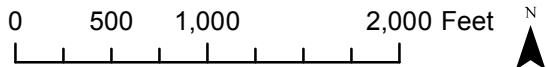



Reach = 4A
 River Mile = 168.1
 Merced County
 Right Bank
 X = -120.5870 Y = 37.1153 Status = Existing
 (Horizontal Datum is NAD83)
 Distance From River (ft) = 163
 Reference Elevation (ft NAVD88) =
 Site = Washington Road

Agency = DWR
 Measurements:
 Type = Telemetry
 Interval = 15 min
 Date Range = 3/15/2010 - 5/8/2012

Description:
 Sensor at real-time flow gaging station

Ground Surface Elevation (ft) =
 Monitoring Depth (ft) =



 Temperature

Monitoring Location SWA



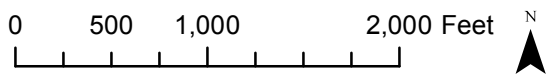
Reach = 4A
 River Mile = 174.0
 Merced County
 Right Bank

X = -120.5482 Y = 37.0552 Status = Existing
 (Horizontal Datum is NAD83)
 Distance From River Centerline (ft)=
 Reference Elevation (ft NAVD88) =
 Site = SJR Upstream of Highway 152

Agency = USBR
 Measurements:
 Type = Datalogger
 Interval = Hourly
 Timeseries unavailable

Description:
 Cabled to willow tree 50-55 ft downstream of second power pole south of highway 152. 5 ft downstream of SJRUSHWY152B.

Ground Surface Elevation (ft) =
 Monitoring Depth (ft) =



Monitoring Location USHWY152A



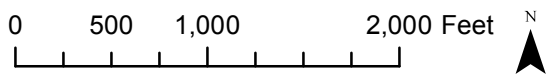
Reach = 4A
 River Mile = 174.0
 Merced County
 Right Bank

X = -120.5482 Y = 37.0552 Status = Existing
 (Horizontal Datum is NAD83)
 Distance From River Centerline (ft)=
 Reference Elevation (ft NAVD88) =
 Site = SJR Upstream of Highway 152

Agency = USBR
 Measurements:
 Type = Datalogger
 Interval = Hourly
 Timeseries unavailable

Description:
 Cabled to willow tree 50-55 ft downstream of second power pole south of highway 152. 5 ft upstream of SJRUSHWY152A.

Ground Surface Elevation (ft) =
 Monitoring Depth (ft) =



Monitoring Location USHWY152B