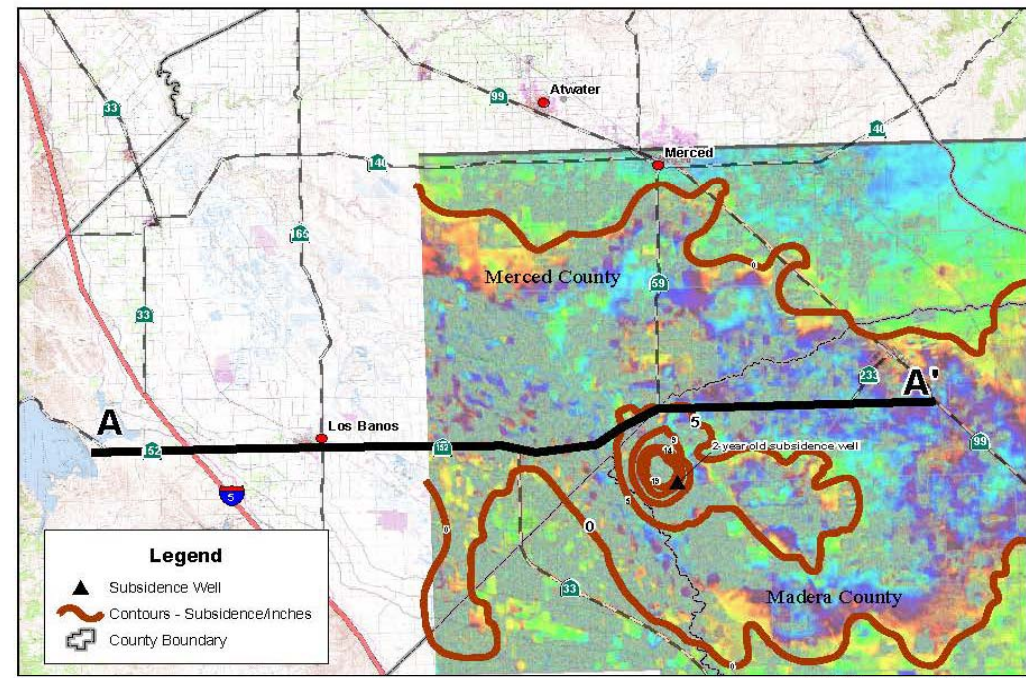
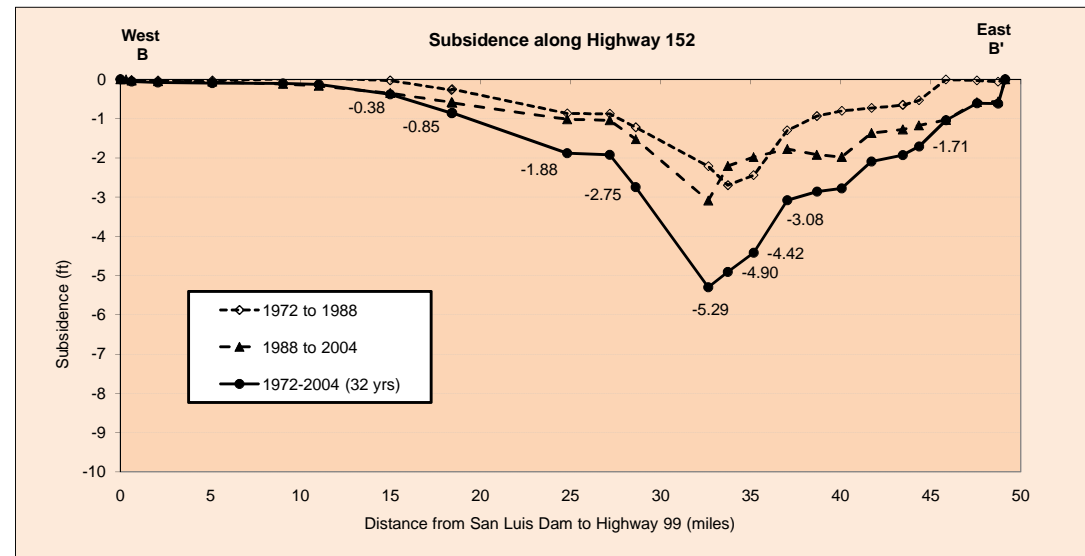


DESIG.	2004-1988 DELTA PUB.EL & MEAS.(M)		DESIG.	1972 29 elev (m)	VERTCON model (add to 29)	VERTCON'd 1972 leveling			Subsidence		CUM DIST. (KM)	1972-2004 (m)	1972-2004 (32 yrs) feet	Subsidence added by GTD (MP220) - typ yellow	Subsidence added by GTD (MP220) - typ yellow	Subsidence added by GTD (MP220) - typ yellow	Subsidence rate increase between 1972 and 1988 based data	Distance (miles)		GSE (ft)	
	1988 PUB. EL. (M)	1988 PUB. EL. (M)				VC X1234-DEs	72-88	1972 to 1988 feet	1972-2004 (32 yrs) feet	1988 to 2004								1988 to 2004	conversion factors		conversion factors
N 1414								0	0	80	79.089	0.00	0.00					3.28084	0.62137	0.62137	3.28084
X 1234	-0.17044	81.663	X 1234	81.02	0.661	81.681		-0.018	-0.05904	0.643	78.446	-0.19	-0.62	-0.02	-0.56	-0.03	0.02	-0.62	49.14	0	267.92
U 817	-0.17698	71.634	U 817	70.987	0.656	71.643	71.648	-0.009	-0.02952	2.528	76.561	-0.19	-0.61	-0.02	-0.58	-0.04	0.02	-0.61	48.74	0.40	235.02
S 817	-0.31483	67.406	S 817	66.755	0.653	67.408	67.416	-0.002	-0.00656	5.298	73.791	-0.32	-1.04	-0.03	-1.03	-0.06	0.03	-1.04	45.85	3.29	221.15
R 817 RESET	-0.35742	64.723	R 817 RESET	64.23	0.656	64.886	64.891	-0.163	-0.53464	7.716	71.373	-0.52	-1.71	-0.05	-1.17	-0.07	0.02	-1.71	44.35	4.79	212.35
G 158 RESET	-0.38837	60.799	G 158 RESET	60.34	0.658	60.998	61.001	-0.199	-0.65272	9.154	69.935	-0.59	-1.93	-0.06	-1.27	-0.08	0.02	-1.93	43.46	5.69	199.47
P 817 RESET	-0.41627	57.350	P 817 RESET	56.91	0.662	57.572	57.571	-0.222	-0.72816	11.950	67.139	-0.64	-2.09	-0.07	-1.37	-0.09	0.02	-2.09	41.72	7.43	188.16
N 817 RESET	-0.60166	53.996	N 817 RESET	53.572	0.668	54.24	54.233	-0.244	-0.80032	14.613	64.476	-0.85	-2.77	-0.09	-1.97	-0.12	0.04	-2.77	40.06	9.08	177.15
E 158 RESET	-0.58595	50.239	E 158 RESET	49.852	0.673	50.525	50.513	-0.286	-0.93808	16.838	62.251	-0.87	-2.86	-0.09	-1.92	-0.12	0.03	-2.86	38.68	10.46	164.83
E 982	-0.54132	47.574	E 982	47.292	0.678	47.97	47.953	-0.396	-1.29888	19.483	59.606	-0.94	-3.08	-0.10	-1.78	-0.11	0.01	-3.08	37.04	12.11	156.08
D 1235	-0.6022	43.364	D 1235	43.426	0.683	44.109	44.087	-0.745	-2.4436	22.494	56.595	-1.35	-4.42	-0.14	-1.98	-0.12	-0.01	-4.42	35.17	13.98	142.27
FLANAGAN 2	-0.67191	39.247	FLANAGAN 2	39.383	0.687	40.07	40.044	-0.823	-2.69944	24.794	54.295	-1.49	-4.90	-0.15	-2.21	-0.14	-0.02	-4.90	33.74	15.41	128.76
F 982	-0.93979	38.283	F 982	38.268	0.689	38.957	38.929	-0.674	-2.21072	26.541	52.548	-1.61	-5.29	-0.17	-3.08	-0.19	0.03	-5.29	32.65	16.49	125.60
J 1235	-0.46422	35.531	J 1235	35.21	0.694	35.904	35.871	-0.373	-1.22344	33.027	46.062	-0.84	-2.75	-0.09	-1.52	-0.10	0.01	-2.75	28.62	20.52	116.57
T 1235	-0.31692	36.467	T 1235	36.04	0.695	36.735	36.701	-0.268	-0.87904	35.350	43.739	-0.58	-1.92	-0.06	-1.04	-0.06	0.01	-1.92	27.18	21.97	119.64
828	-0.30956	34.622	828	34.19	0.696	34.886	34.851	-0.264	-0.86592	39.152	39.937	-0.57	-1.88	-0.06	-1.02	-0.06	0.00	-1.88	24.82	24.33	113.59
HPGN 10 01	-0.18208	31.070	HPGN 10 01	30.50	0.647	31.147	31.161	-0.077	-0.25256	49.429	29.660	-0.26	-0.85	-0.03	-0.60	-0.04	0.01	-0.85	18.43	30.71	101.94
Z 1233	-0.17712	30.872	Z 1233	30.31	0.646	30.956	30.971	-0.084	-0.27552	49.489	29.600	-0.26	-0.86	-0.03	-0.58	-0.04	0.01	-0.86	18.39	30.75	101.29
Y 1233	-0.10702	33.046	Y 1233	32.34	0.715	33.055	33.001	-0.009	-0.02952	54.975	24.114	-0.12	-0.38	-0.01	-0.35	-0.02	0.01	-0.38	14.98	34.16	108.42
W 1235	-0.05062	38.435	W 1235	37.577	0.847	38.424	38.238	0.011	0.03608	61.364	17.725	-0.04	-0.13	0.00	-0.17	-0.01	0.01	-0.13	11.01	38.13	126.10
Y 1235	-0.03518	39.963	Y 1235	39.098	0.862	39.96	39.759	0.003	0.00984	64.550	14.539	-0.03	-0.11	0.00	-0.12	-0.01	0.00	-0.11	9.03	40.11	131.11
D 153	-0.01767	79.718	D 153	78.856	0.872	79.728	79.517	-0.01	-0.0328	70.873	8.216	-0.03	-0.09	0.00	-0.06	0.00	0.00	-0.09	5.11	44.04	261.54
Y 1057	-0.01459	87.329	Y 1057	86.465	0.872	87.337	87.126	-0.008	-0.02624	75.730	3.359	-0.02	-0.07	0.00	-0.05	0.00	0.00	-0.07	2.09	47.06	286.51
K 361	-0.00862	86.973	K 361	86.111	0.869	86.98	86.772	-0.007	-0.02296	78.091	0.998	-0.02	-0.05	0.00	-0.03	0.00	0.00	-0.05	0.62	48.52	285.34
A 1058	0	87.737	A 1058	86.87	0.866	87.736	87.531	0.001	0.00328	78.590	0.499	0.00	0.00	0.00	0.00	0.00	0.00	0.00	0.31	48.83	287.85
end	0		end					0	0	80.000	0.000	0	0.00	0.00	0.00	0.00	0.00	0.00	49.71		



Subsidence Madera and Merced Counties

