

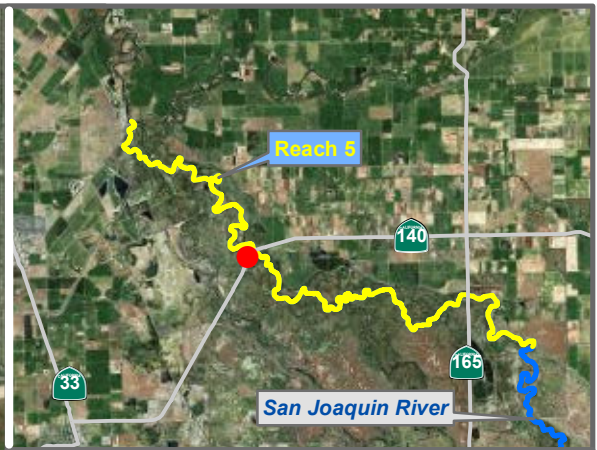
RECLAMATION
Managing Water in the West

Reach 5 GW Monitoring Locations

Preliminary Data

SAN JOAQUIN RIVER
 RESTORATION PROGRAM





Reach = 5
 River Mile = 125.1
 X = -120.9332 Y = 37.3080
 (Horizontal Datum is NAD83)
 Distance From River (ft)= 1043
 Reference Elevation (ft NAVD88) = 64.9
 Site = Hwy. 140
 Land Use = Public Land
 Protocol Reference = ATR App F Sec 2
 Agency = USBR
 Measurements:
 1. Type = Electronic Sounder Measurement
 Interval = Monthly
 Date Range = 1/27/2010 - 10/14/2010
 2. Type =
 Interval =
 Date Range =
 3. Type =
 Interval =
 Date Range =

Description:
 2 inch PVC casing FM, no adjacent fields, no threshold

Root Depth (ft bgs) = 4.0
 GS Buffer (ft) =
 Screen Depth (ft bgs) = 28.7 - 48.7
 Capillary Rise (ft) = 1.0
 Historical GW level (ft bgs) = 50
 Field Threshold (ft bgs) = 5
 Threshold Elevation (ft NAVD88) = 59.9

Influences:

-

* = assumed value
 bgs = below ground surface
 NR = not recorded

Last Updated:
 5/23/2012

Preliminary Data

0 500 1,000 2,000 Feet



Groundwater

Monitoring Location MW-09-121



Reach = 5
 River Mile = 125.1
 X = -120.9308 Y = 37.3095
 (Horizontal Datum is NAD83)
 Distance From River (ft)= 143
 Reference Elevation (ft NAVD88) = 70.3
 Site = Hwy. 140
 Land Use = Public Land
 Protocol Reference = ATR App F Sec 2
 Agency = USBR

Measurements:
 1. Type = Electronic Sounder Measurement
 Interval = Monthly
 Date Range = 1/27/2010 - 10/14/2010
 2. Type =
 Interval =
 Date Range =
 3. Type =
 Interval =
 Date Range =

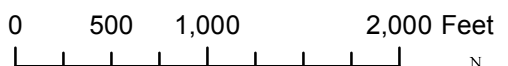
Description:
 2 inch PVC casing FM, no adjacent fields, no threshold

Root Depth (ft bgs) = 4.0
 GS Buffer (ft) =
 Screen Depth (ft bgs) = 34.3 - 54.3
 Capillary Rise (ft) = 1.0
 Historical GW level (ft bgs) = 50
 Field Threshold (ft bgs) = 5
 Threshold Elevation (ft NAVD88) = 65.3

Influences:
 SJR

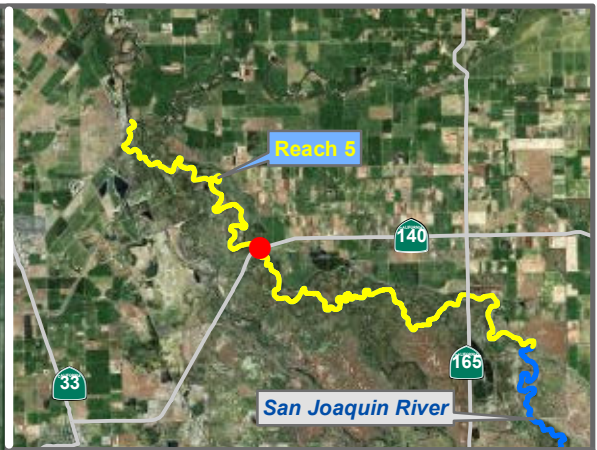
* = assumed value
 bgs = below ground surface
 NR = not recorded

Last Updated:
 5/23/2012
 Preliminary Data



Monitoring Location

MW-09-123



Reach = 5
 River Mile = 125.1
 X = -120.9286 Y = 37.3108
 (Horizontal Datum is NAD83)
 Distance From River (ft) = 599
 Reference Elevation (ft NAVD88) = 70
 Site = Hwy. 140
 Land Use = Public Land
 Protocol Reference = ATR App F Sec 2
 Agency = USBR
 Measurements:
 1. Type = Electronic Sounder Measurement
 Interval = Monthly
 Date Range = 1/27/2010 - 10/14/2010
 2. Type =
 Interval =
 Date Range =
 3. Type =
 Interval =
 Date Range =

Description:
 2 inch PVC casing FM, no adjacent fields, no threshold

Root Depth (ft bgs) = 4.0
 GS Buffer (ft) =
 Screen Depth (ft bgs) = 29.5 - 49.5
 Capillary Rise (ft) = 1.0
 Historical GW level (ft bgs) = 50
 Field Threshold (ft bgs) = 5
 Threshold Elevation (ft NAVD88) = 65.0

Influences:
 SJR

Last Updated:
 5/23/2012
 Preliminary Data

0 500 1,000 2,000 Feet



 Groundwater

Monitoring Location

MW-09-124



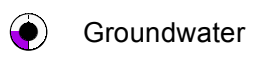
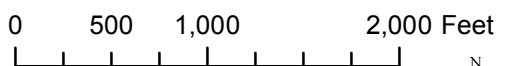
Reach = 5
 River Mile = 125.1
 X = -120.9151 Y = 37.3140
 Distance From River (ft) = 3879
 Reference Elevation (ft NAVD88) = 74.4
 Site = Hwy. 140
 Land Use = Alfalfa
 Protocol Reference = ATR App F Sec 2
 Agency = USBR
 Measurements:
 1. Type = Electronic Sounder Measurement
 Interval = Monthly
 Date Range = 1/27/2010 - 10/14/2010
 2. Type =
 Interval =
 Date Range =
 3. Type =
 Interval =
 Date Range =

Description:
 2 inch PVC casing FM

 Root Depth (ft bgs) = 4.0
 GS Buffer (ft) = 0.0*
 Screen Depth (ft bgs) = 29.0 - 49.0
 Capillary Rise (ft) = 1.0
 Historical GW level (ft bgs) = 50
 Field Threshold (ft bgs) = 5
 Threshold Elevation (ft NAVD88) = 69.4

Influences:
 -

 Last Updated:
 5/23/2012
 Preliminary Data



Monitoring Location

MW-09-125