



# Water Management Technical Feedback Meeting


September 16, 2011  
Fresno, CA



## Agenda Overview


---

- Water Supply Briefing
- Interim Flow Releases and Accounting
- Restoration Flow Guidelines
- Recapture and Recirculation
- Friant-Kern Canal Capacity Restoration Feasibility Study
- Madera Canal Capacity Restoration Feasibility Study
- Friant-Kern Canal Pump-Back Feasibility Study
- Part III Guidelines
- Next Meeting Date



---

# Comments on Meeting Notes




---

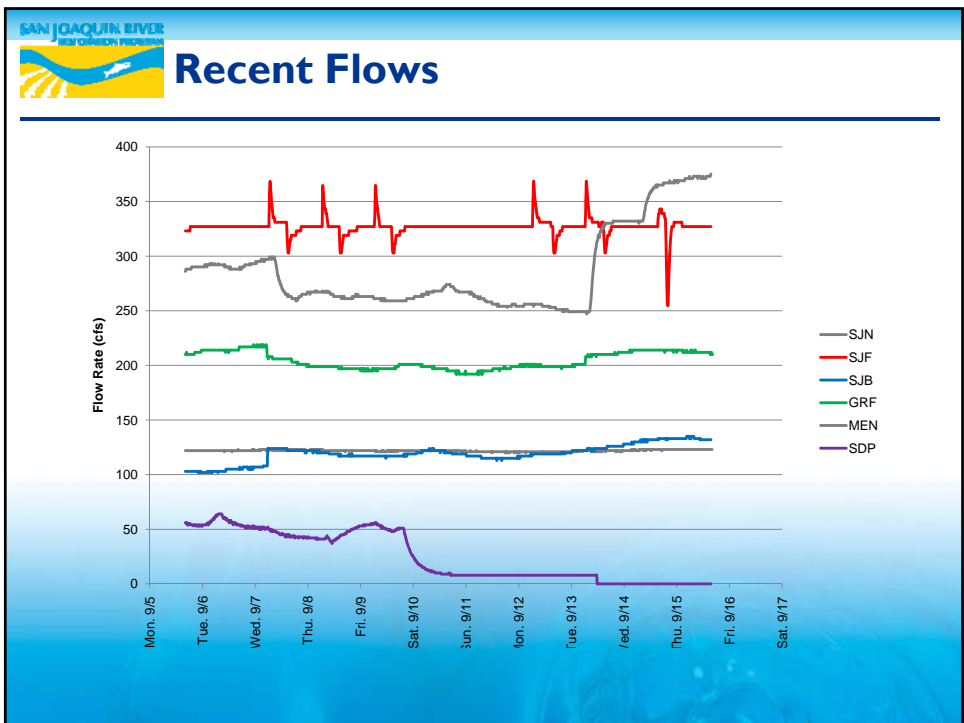
# Water Supply Briefing

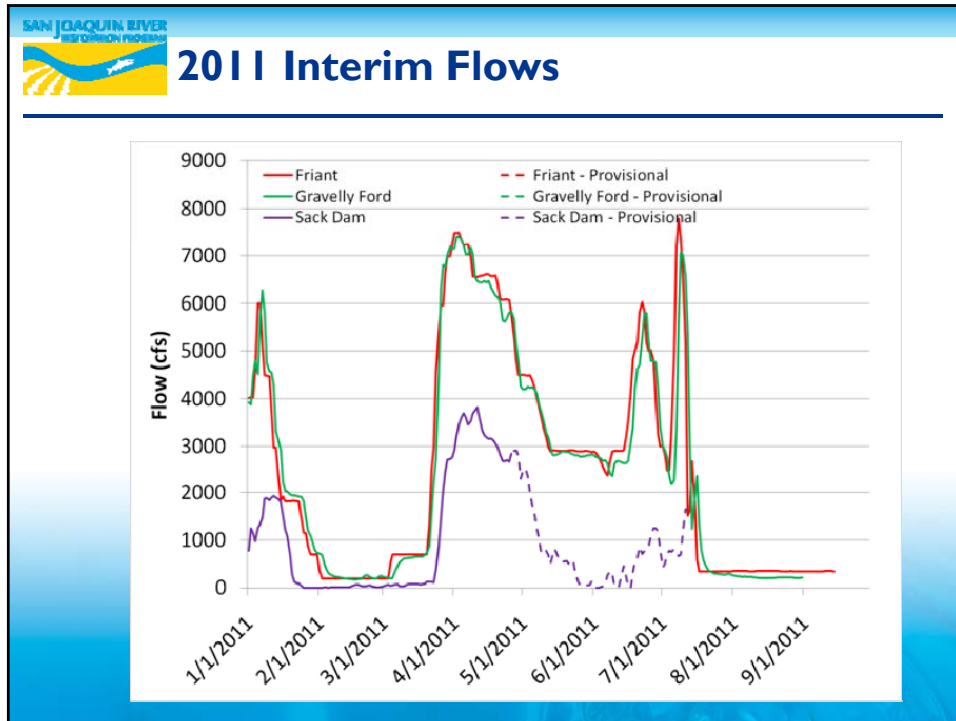
SCCAO





# Interim Flow Releases and Accounting





**SAN JOAQUIN RIVER**  
Interim Flows

### Interim Flow Operation Criteria

- Seepage drainage criteria control releases from Sack Dam at El Nido.
- Mendota Dam inspection and maintenance will begin November 15.
- Reclamation is reviewing a fall pulse Restoration Administrator recommendation.




**Recovered Water Account**

---

**Recovered Water Account**

The slide features a blue gradient background at the bottom with a faint image of water splashing.




**Recovered Water Account**

---

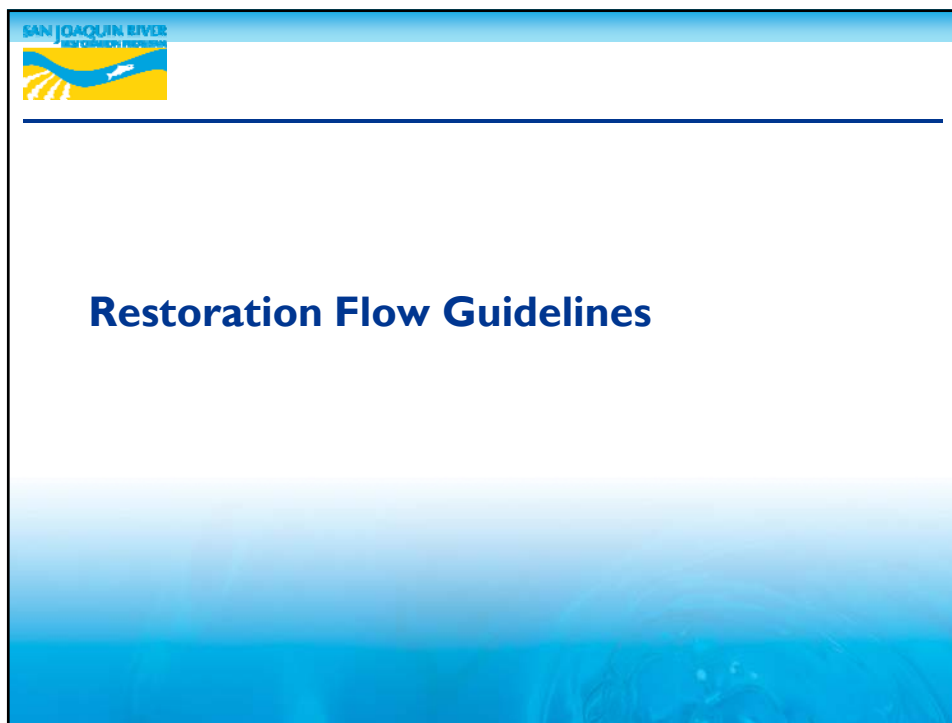
- RWA Methodology
- RWA Balances
- RWA Database
- RWA Standard Operating Procedures.

The slide features a blue gradient background at the bottom with a faint image of water splashing.



## RWA Balances


Total Allocation	680,443
RWA Usage (7/31/2011)	<u>(356,203)</u>
Remaining Balance	324,420



 **2012 RFG Tasks**

---

- 13.(c) – Unexpected Seepage Losses
- 13.(i) – Unreleased Restoration Flows
- 13.(j)(iii) – RWA

 **2012 RFG Schedule**

---

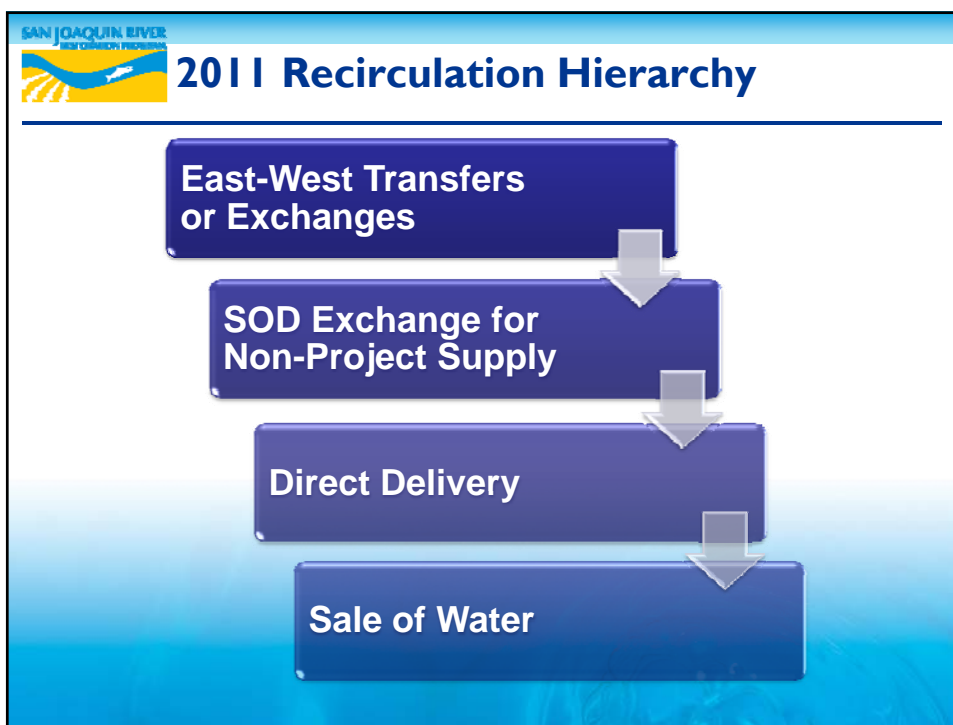
Month	RWA	13(c)	13(i)
AUG. 30	<i>Discussion</i>	<i>Brainstorm</i>	
SEP. 30	<i>Draft</i>	<i>Discussion</i>	<i>Brainstorm</i>
OCT. 26	<i>Finalize</i>	<i>Draft</i>	<i>Discussion</i>
NOV. 15		<i>Finalize</i>	<i>Draft</i>
DEC. 14			<i>Finalize</i>
JAN. 10	<i>2012 Closeout</i>		

- **Brainstorm** – All reasonable ideas.
- **Discussion** – Structured analysis of brainstorming ideas.
- **Drafting** – Developing/writing/editing specific language.
- **Finalize** – Touch-up editing




---

## Recapture / Recirculation






 **2011 Recirculation**


---

- 2011 Total Recapture = 34 TAF
- 2011 To-Date Recapture = 13 TAF
- 2011 To-Date Recirc. = 8.5 TAF
- Available Recirc. in SLR = 4.5 TAF

 **Recapture and Recirculation Plan**

---


- DWR Wheeling
- Plan Funding
- Westside Allocation



## Westside Allocation

---

- What is the reduction in supply?
- What are the legal requirements?
- Is this an “involuntary reduction”?
- How do we avoid, reduce, or mitigate?




## FRIANT-KERN CANAL CAPACITY RESTORATION FEASIBILITY STUDY

 **Project Update**

---

- Finalizing EA/FONSI and Feasibility Report
  - Cultural Resources
  - BA/BO
- Cooperative Agreement
  - Single Source Selection
  - 2 Agreements
    - Design Agreement
    - Construction Agreement

 **Project Update**

---

- Geotechnical Investigation
  - Test compaction of earthen sections
- DEC Review
  - October 17



**SAN JOAQUIN RIVER**  
Final Collection Program

## MADERA CANAL CAPACITY RESTORATION FEASIBILITY STUDY

This slide serves as the title page for the 'Madera Canal Capacity Restoration Feasibility Study'. It features the same header as the previous slide, including the 'SAN JOAQUIN RIVER Final Collection Program' logo. The main title is centered on the page in a large, bold, dark blue font. The background is a light blue gradient with a faint image of water splashes at the bottom.

**SAN JOAQUIN RIVER**  
WATER COLLECTION PROGRAM

## MC Update

---

- Site Visit – Sept. 20-22
- Project Management Plan

**SAN JOAQUIN RIVER**  
WATER COLLECTION PROGRAM


## MC - Schedule

---

Draft Project Management Plan	Sept.
Kick-off Meeting	Sept.
Finalize PMP	Oct.




# Friant-Kern Canal Reverse Flow Pump-Back Facilities Project



## Operations Analysis


Alternative	Pump Sizes (cfs)			Pump-Back (AF)	
				100%	50%
No Action	80	50	0	<b>12,600</b>	<b>10,200</b>
Legislated	500	500	500	<b>27,300</b>	<b>19,700</b>
Unrestricted	1,000	1,000	1,000	<b>27,300</b>	<b>19,700</b>
95 <sup>th</sup> Percentile	200	150	75	<b>22,800</b>	<b>17,600</b>




## Economics Analysis

---

- CVPM
  - Groundwater pumping.
  - Qualitative statement on dry year benefit.
- Unlikely to find NED Benefits
  - Local Benefits



## Part III Financial Assistance for Local Groundwater Banking



### Part III Status


---

- Reclamation consulted with the Friant Division long-term contractors on Financial Assistance Guidelines.
- Reclamation is finalizing the guidelines.
- A Funding Opportunity Announcement will be posted pending appropriations.



### Public Comment / Next Meetings





## Next Meetings

Day	FWA Advisory Committee Meeting in Visalia	SJRRP WM Technical Feedback Meeting in Fresno
Friday	September 9	September 16
Friday	October 4	
Friday	November 7	
Friday	December 5 (or 9)	December 16
Friday	January 6	