

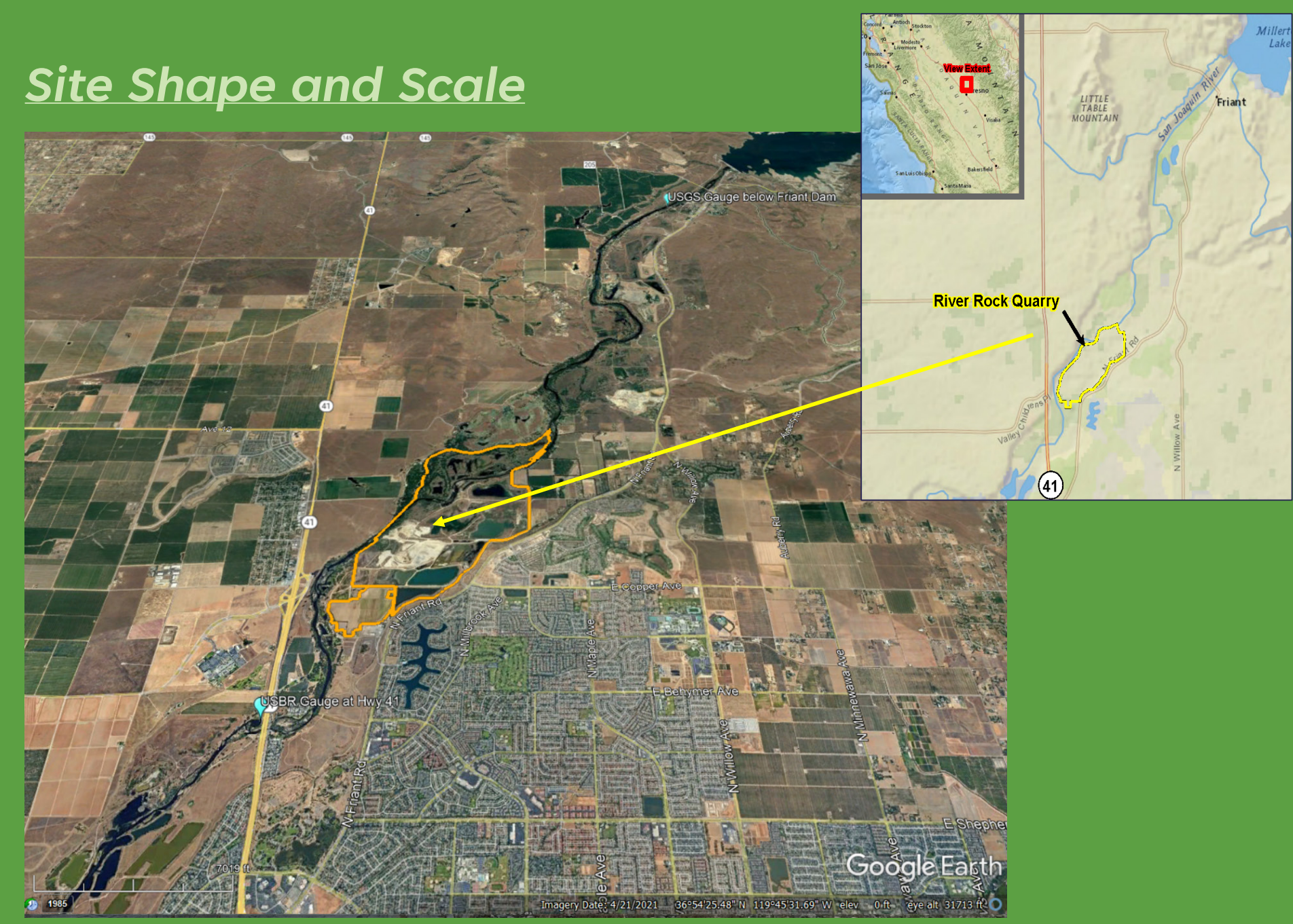
# Multi-benefit Restoration at a Former 900-Acre Gravel Quarry: River Rock Mitigation Bank

Collaborating Authors: Geoff Smick - WRA - Virginia Mahacek, WRA - Michael Linton, Vulcan Materials



River Rock is a former 900-acre gravel mine on the south bank of the San Joaquin River, 8 miles downstream from Friant Dam and 1 mile upstream of Hwy. 41 (Reach 1a). The operator, Vulcan Materials, is planning a multibenefit project that includes stream and riparian habitat restoration and recreation benefits. The project concept includes regrading over 700 acres to expand the floodplain and create new side channels resulting in over 500 acres of new floodplain and riparian habitat. The current design has over 200 acres of floodplain that would be inundated with flows of 1,400 cfs. While the majority of the historic mining pits will be regraded, the two largest pits will remain and be used primarily for recreation.

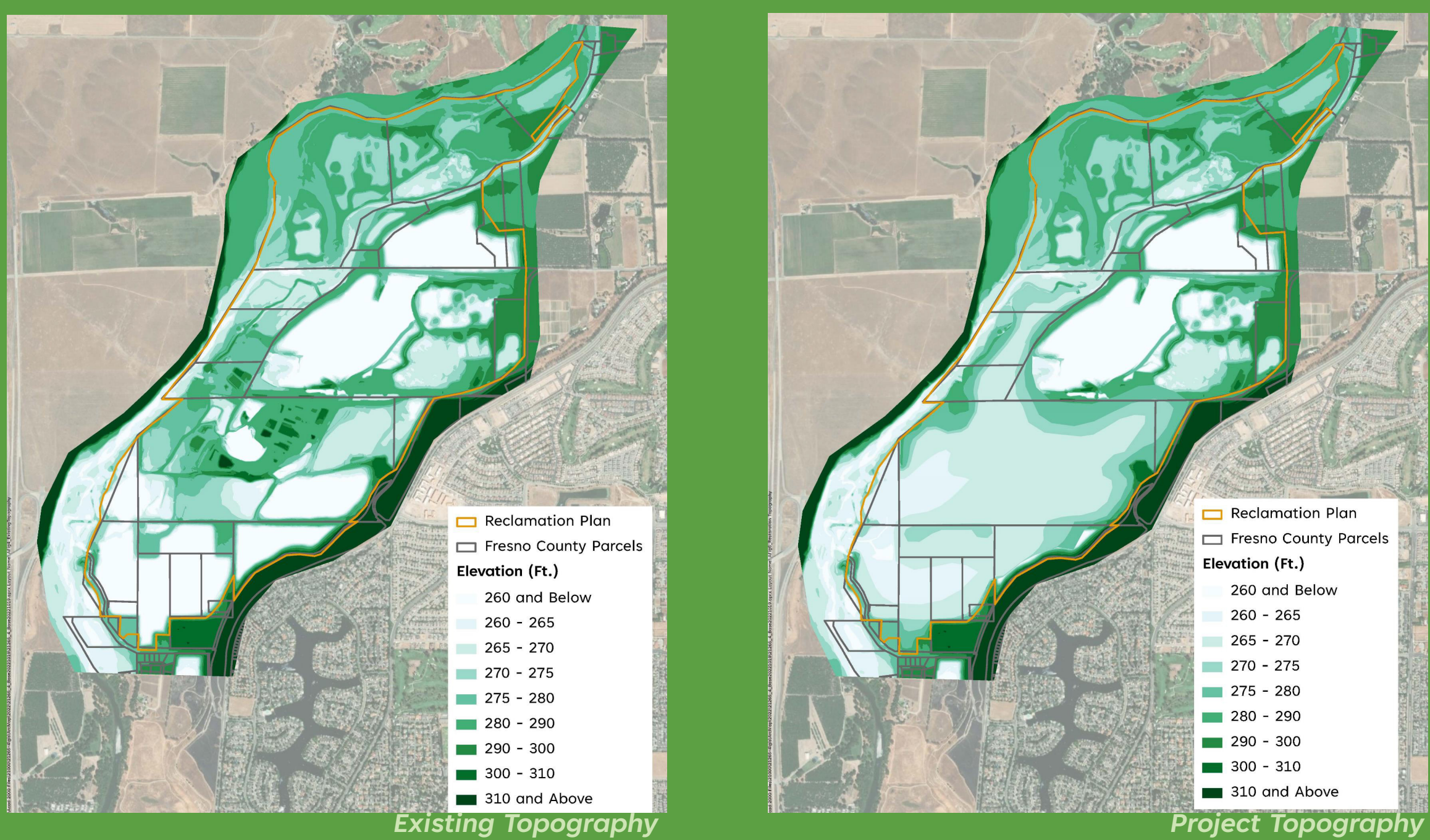
## Site Shape and Scale



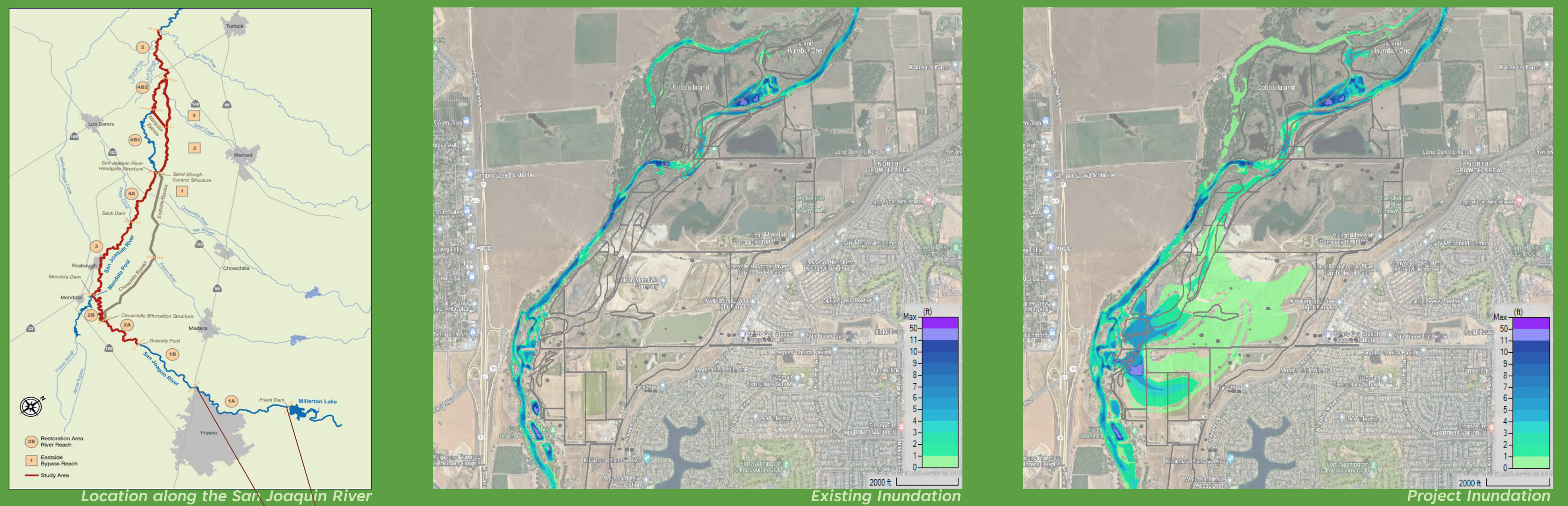
The San Joaquin River Conservancy owns approximately 1/3rd of the property and is a project proponent making this a great example of a public private partnership. The San Joaquin River Parkway and Conservation Trust also owns several inholdings and is a project proponent that would manage the recreation aspects of the project. While the scale of the project is impressive, it requires considerable earthwork (>4.5M cy). By creating a mitigation bank, the project sponsor can fund and implement the project with reduced financial risk. An added benefit of the project as a mitigation bank includes the establishment of a management plan and endowment to ensure the project functions well into the future.

The current grading concept was developed to minimize fish stranding and to support habitat elements of the experimental population of spring-run chinook. The project proponents are eager to receive feedback from SJRRP member agencies and experts on various aspects of the project including habitat elements, salmonid issues, and the potential for other multibenefit uses such as flood abatement and groundwater recharge.

## Existing and Project Topography



## Existing and Project Inundation



## On-going Site Pond Monitoring and San Joaquin River Flows

